

14-3-3 sigma Rabbit pAb

货号: **AYP14233**

产品信息

反应	Human,Mouse,Rat
宿主	Rabbit
克隆性	Polyclonal
预测反应	IHC: Mus musculus
应用	WB IHC
推荐浓度	WB: 1:500 - 1:1000 IHC: 1:50 - 1:200
理论分子量	24kDa/27kDa
实测分子量	28KDa
形式	Liquid
保存条件	Store at -20°C. Avoid freeze / thaw cycles. Buffer: PBS with 0.01% thiomersal,50% glycerol,pH7.3.
偶联物	Unconjugated
阳性对照	HeLa,A-549,MCF7,A-431,Mouse lung,Mouse kidney,Rat lung
细胞定位	Cytoplasm,Nucleus,Secreted
纯化	Affinity purification

抗原信息

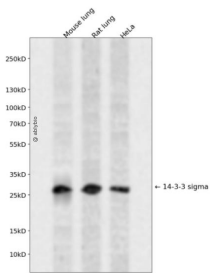
抗原信息	A synthetic peptide corresponding to a sequence within amino acids 1-100 of human 14-3-3 sigma (NP_06133.1).
序列	MERASLIQKAKLAEQAERYEDMAAFMKGAVEKGEELSCEERNLLSVAYKNVGGQRAAWRVLSSIEQKSNEEGSEEKGPEVREYREKVELQGVCDTVL

靶点信息

研究背景	Adapter protein implicated in the regulation of a large spectrum of both general and specialized signaling pathways. Binds to a large number of partners, usually by recognition of a phosphoserine or phosphothreonine motif. Binding generally results in the modulation of the activity of the binding partner. When bound to KRT17, regulates protein synthesis and epithelial cell growth by stimulating Akt/mTOR pathway. May also regulate MDM2 autoubiquitination and degradation and thereby activate p53/TP53.
------	--

基因ID	2810
基因名	SFN
Swiss	P31947
别名	SFN;YWHAS;stratifin

产品验证



Western blot analysis of 14-3-3 sigma expressed in Mouse lung,Rat lung,HeLa using 14-3-3 sigma Rabbit pAb at 1:1000. Secondary antibody: HRP Goat Anti-Rabbit IgG (H+L) at 1:5000. Lysates/proteins: 30ug per lane. Blocking buffer: 5% non-fat dry milk in TBST. Detection: ECL Enhanced Kit. Exposure time: 120s.

实验步骤

访问官网浏览详情: www.ablybio.cn