

RBM6 Rabbit pAb

货号: **AYP14221**

产品信息

反应	Human
宿主	Rabbit
克隆性	Polyclonal
预测反应	WB: Homo sapiens
应用	WB
推荐浓度	WB: 1:500 - 1:2000
理论分子量	59kDa/69kDa/128kDa
实测分子量	150kDa
形式	Liquid
保存条件	Store at -20°C. Avoid freeze / thaw cycles. Buffer: PBS with 0.02% sodium azide, 50% glycerol, pH7.3.
偶联物	Unconjugated
阳性对照	A-549, 293T, HeLa, HepG2
细胞定位	Nucleus
纯化	Affinity purification

抗原信息

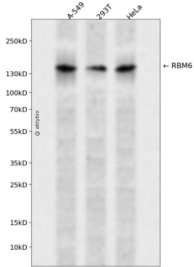
抗原信息	Recombinant fusion protein containing a sequence corresponding to amino acids 530-770 of human RBM 6 (NP_005768.1).
序列	TLEYVSSLDWFYCKRCKANIGGHRSSCSFCKNPREVTEAKQELITYPQPQKTSIPAPLEKQPNQPLRPADKEPEPRKREEGQ ESRLGHQKREAERYLPPSRREGPTFRDRERESWSGETRQDGESKTIMLKRIYRSTPPEVIVEVLEPYVRLTTANVRIIKNRT GPMGHTYGFIDLDSHAEALRVVKILQNLDPFSDGKMAVAVNLATGKRRNDSGDHSDHMHYQGKKYFRDRRGGR

靶点信息

研究背景	Specifically binds poly(G RNA homopolymers in vitro.
基因ID	10180
基因名	RBM6

Swiss	P78332
别名	RBM6;3G2;DEF-3;DEF3;HLC-11;NY-LU-12;g16

产品验证



Western blot analysis of RBM6 expressed in A-549,293T,HeLa using RBM6 Rabbit pAb at 1:1000. Secondary antibody: HRP Goat Anti-Rabbit IgG (H+L) at 1:5000. Lysates/proteins: 30ug per lane. Blocking buffer: 5% non-fat dry milk in TBST. Detection: ECL Enhanced Kit. Exposure time: 120s.

实验步骤

访问官网浏览详情: www.ablybio.cn