

RAB13 Rabbit pAb

货号: **AYP14207**

产品信息

反应	Human,Rat
宿主	Rabbit
克隆性	Polyclonal
预测反应	IF: Mus musculus,Homo sapiens co-IP: Mus musculus,Homo sapiens
应用	WB IF/ICC
推荐浓度	WB: 1:1000 - 1:2000 IF/ICC: 1:50 - 1:200
理论分子量	22kDa
实测分子量	23kDa
形式	Liquid
保存条件	Store at -20°C. Avoid freeze / thaw cycles. Buffer: PBS with 0.01% thiomersal,50% glycerol,pH7.3.
偶联物	Unconjugated
阳性对照	HeLa,293T,LO2
细胞定位	Cell junction,Cell membrane,Cell projection,Cytoplasmic side,Cytoplasmic vesicle,Cytoplasmic vesicle membrane,Golgi apparatus,Lipid-anchor,Recycling endosome membrane,lamellipodium,secretory vesicle membrane,tight junction,trans-Golgi network membrane
纯化	Affinity purification

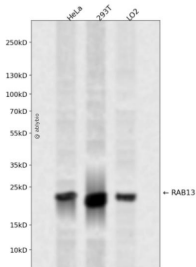
抗原信息

抗原信息	Recombinant fusion protein containing a sequence corresponding to amino acids 1-203 of human RAB13 (NP_002861.1).
序列	MAKAYDHLFKLLLIGDSGVGKTCIIIRFAEDNFNNTYISTIGIDFKIRTVDIEGKKIKLQVWDTAGQERFKTITTAYYRGAMGII LVYDITDEKSFENIQNWMKSIKENASAGVERLLLGKCDMEAKRKVQKEQADKLAREHGIRFFETSAKSSMNVDEAFSSL ARDILLKSGGRRSNGNGNKPSTDLKTCDDKNTNKCSLG

靶点信息

研究背景	This gene is a member of the Rab family of small G proteins and plays a role in regulating membrane trafficking between trans-Golgi network (TGN) and recycling endosomes (RE). The encoded protein is involved in the assembly of tight junctions, which are components of the apical junctional complex (AJC) of epithelial cells. The AJC plays a role in forming a barrier between luminal contents and the underlying tissue. Additional functions associated with the protein include endocytic recycling of occludin, regulation of epithelial cell scattering, neuronal regeneration and regulation of neurite outgrowth. Alternately spliced transcript variants have been observed for this gene. A pseudogene associated with this gene is located on chromosome 12.
基因ID	5872
基因名	RAB13
Swiss	P51153
别名	RAB13;GIG4

产品验证



Western blot analysis of RAB13 expressed in HeLa,293T,LO2 using RAB13 Rabbit pAb at 1:1000. Secondary antibody: HRP Goat Anti-Rabbit IgG (H+L) at 1:5000. Lysates/proteins: 30ug per lane. Blocking buffer: 5% non-fat dry milk in TBST. Detection: ECL Enhanced Kit. Exposure time: 120s.

实验步骤

访问官网浏览详情: www.ablybio.cn