

GCH1 Rabbit pAb

货号: **AYP14204**

产品信息

反应	Human,Mouse,Rat
宿主	Rabbit
克隆性	Polyclonal
预测反应	IF: Homo sapiens
应用	WB IF/ICC
推荐浓度	WB: 1:500 - 1:1000 IF/ICC: 1:50 - 1:200
理论分子量	23kDa/25kDa/27kDa
实测分子量	28KDa
形式	Liquid
保存条件	Store at -20°C. Avoid freeze / thaw cycles. Buffer: PBS with 0.01% thiomersal,50% glycerol,pH7.3.
偶联物	Unconjugated
阳性对照	Mouse liver,Rat liver
细胞定位	Cytoplasm,Nucleus
纯化	Affinity purification

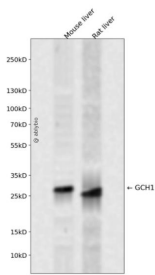
抗原信息

抗原信息	Recombinant fusion protein containing a sequence corresponding to amino acids 55-250 of human GCH1 (NP_000152.1).
序列	GERPRSEEDNELNLPNLAAAYSSILSSSLGENPQRQGLLKTPWRAASAMQFFTKGYQETISDVLNDAIFDEDHDEMVIVKDI DMFSMCEHHLVFPVGVKVIHIGYLPNKQVLGLSKLARIVEIYSRRLQVQERLTKQIAVAITEALRPAGVGVVVEATHMCMVMR GVQKMNSKTVTSTMLGVFREDPKTREEFLLIRS

靶点信息

研究背景	This gene encodes a member of the GTP cyclohydrolase family. The encoded protein is the first and rate-limiting enzyme in tetrahydrobiopterin (BH4) biosynthesis, catalyzing the conversion of GTP into 7,8-dihydrobiopterin triphosphate. BH4 is an essential cofactor required by aromatic amino acid hydroxylases as well as nitric oxide synthases. Mutations in this gene are associated with malignant hyperphenylalaninemia and dopa-responsive dystonia. Several alternatively spliced transcript variants encoding different isoforms have been described; however, not all variants give rise to a functional enzyme.
基因ID	2643
基因名	GCH1
Swiss	P30793
别名	GCH1;DYT14;DYT5;DYT5a;GCH;GTP-CH-1;GTPCH1;HPABH4B

产品验证



Western blot analysis of GCH1 expressed in Mouse liver,Rat liver using GCH1 Rabbit pAb at 1:1000. Secondary antibody: HRP Goat Anti-Rabbit IgG (H+L) at 1:5000. Lysates/proteins: 30ug per lane. Blocking buffer: 5% non-fat dry milk in TBST. Detection: ECL Enhanced Kit. Exposure time: 120s.

实验步骤

访问官网浏览详情: www.ablybio.cn