

# RPL18 Rabbit pAb

货号: **AYP14199**

## 产品信息

反应	Human,Mouse,Rat
宿主	Rabbit
克隆性	Polyclonal
预测反应	<b>WB:</b> Homo sapiens
应用	<a href="#">WB</a>
推荐浓度	<b>WB:</b> 1:500 - 1:1000
理论分子量	18kDa/21kDa
实测分子量	22KDa
形式	Liquid
保存条件	Store at -20°C. Avoid freeze / thaw cycles. Buffer: PBS with 0.01% thiomersal,50% glycerol,pH7.3.
偶联物	Unconjugated
阳性对照	HeLa,A-549,Mouse spleen
细胞定位	Cytoplasm
纯化	Affinity purification

## 抗原信息

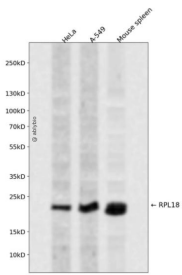
抗原信息	Recombinant fusion protein containing a sequence corresponding to amino acids 1-188 of human RPL18 (NP_000970.1).
序列	MGVDIRHNKDRKVRKEPKSQDIYLRLLVKLYRFLARRTNSTFNQVVLKRLFMSRTNRPPLSLSRMIRKMKLPGRENKTAVVVGTTDDVRVQEVPKLKVLCALRVTSRARSRLRAGGKILTFDQLALDSPKGCCTVLLSGPRKGREVYRHFHGKAPGTPHSHTKPYVRSKGRKFERARGRRASRGYKN

## 靶点信息

研究背景	Ribosomes, the organelles that catalyze protein synthesis, consist of a small 40S subunit and a large 60S subunit. Together these subunits are composed of 4 RNA species and approximately 80 structurally distinct proteins. This gene encodes a member of the L18E family of ribosomal proteins that is a component of the 60S subunit. As is typical for genes encoding ribosomal proteins, there are multiple processed pseudo genes of this gene dispersed through the genome. Alternatively spliced transcript variants encoding multiple isoforms have been observed for this gene.
------	--

基因ID	6141
基因名	RPL18
Swiss	Q07020
别名	RPL18;L18

## 产品验证



Western blot analysis of RPL18 expressed in HeLa, A-549, Mouse spleen using RPL18 Rabbit pAb at 1:1000. Secondary antibody: HRP Goat Anti-Rabbit IgG (H+L) at 1:5000. Lysates/proteins: 30ug per lane. Blocking buffer: 5% non-fat dry milk in TBST. Detection: ECL Enhanced Kit. Exposure time: 120s.

## 实验步骤

访问官网浏览详情: [www.ablybio.cn](http://www.ablybio.cn)