

slc25a43 Rabbit pAb

货号: **AYP14198**

产品信息

反应	Human,Mouse,Rat
宿主	Rabbit
克隆性	Polyclonal
预测反应	WB: Mus musculus
应用	WB
推荐浓度	WB: 1:500 - 1:1000
理论分子量	38kDa
实测分子量	38KDa
形式	Liquid
保存条件	Store at -20°C. Avoid freeze / thaw cycles. Buffer: PBS with 0.05% proclin300,50% glycerol,pH7.3.
偶联物	Unconjugated
阳性对照	SK-BR-3
细胞定位	Mitochondrion inner membrane,Multi-pass membrane protein
纯化	Affinity purification

抗原信息

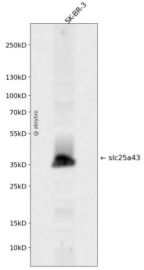
抗原信息	A synthetic peptide corresponding to a sequence within amino acids 1-100 of human slc25a43 (NP_660348.2).
序列	MATWRRDGRLLTGGQRLLCAGLAGTSLSLTAPLELATVLAQGVVVRGHARGPWATGHRVWRAEGLRALWKGNAVACLRLFPCSAVQLAAYRKFFVLFVFTDD

靶点信息

研究背景	This gene encodes a member of the mitochondrial carrier family of proteins.
基因ID	203427
基因名	SLC25A43

Swiss	Q8WUT9
别名	SLC25A43

产品验证



Western blot analysis of slc25a43 expressed in SK-BR-3 using slc25a43 Rabbit pAb at 1:1000. Secondary antibody: HRP Goat Anti-Rabbit IgG (H+L) at 1:5000. Lysates/proteins: 30ug per lane. Blocking buffer: 5% non-fat dry milk in TBST. Detection: ECL Enhanced Kit. Exposure time: 120s.

实验步骤

访问官网浏览详情: www.ablybio.cn