

ARHGEF7 Rabbit pAb

货号: **AYP14187**

产品信息

反应	Human,Mouse,Monkey
宿主	Rabbit
克隆性	Polyclonal
预测反应	IHC: Homo sapiens
应用	WB IF/ICC
推荐浓度	WB: 1:500 - 1:2000 IF/ICC: 1:50 - 1:100
理论分子量	70kDa/73kDa/82kDa/84kDa/87kDa/90kDa
实测分子量	86kDa
形式	Liquid
保存条件	Store at -20°C. Avoid freeze / thaw cycles. Buffer: PBS with 0.02% sodium azide,50% glycerol,pH7.3.
偶联物	Unconjugated
阳性对照	SW620,Jurkat,COS-1,COS-7,MCF7,K-562,Mouse lung,Mouse heart
细胞定位	Cell junction,Cell projection,Cytoplasm,cell cortex,focal adhesion,lamellipodium,ruffle
纯化	Affinity purification

抗原信息

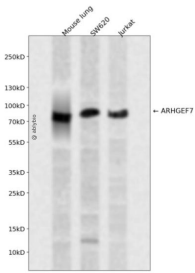
抗原信息	Recombinant fusion protein containing a sequence corresponding to amino acids 1-260 of human ARHGE F7 (NP_001106984.1).
序列	MNSAEQTVTWLITLGVLESPPKKTISDPEGFLQASLKDGVVLCRLLERLLPGTIEKTFDANDLYQGQNFNKVLSLVTLNKVT ADIGLGSDSVCARPSSHRIKSFDSLGSQSLHTRTSKLFQGGYRSLDMTNSNNQLVVRKFNFQQTNEDELSFSKGDVIH VTRVEEGGWEGTLNGRTGWFPNSNYREVKASEKPVSPKSGTLKSPKGFDTTAINKSYYNVVLQNILETENEYSKELQT VLSTYLRPLQTSEKLSSA

靶点信息

研究背景	This gene encodes a protein that belongs to a family of cytoplasmic proteins that activate the Ras-like family of Rho proteins by exchanging bound GDP for GTP. It forms a complex with the small GTP binding protein Rac1 and recruits Rac1 to membrane ruffles and to focal adhesions. Multiple alternatively spliced transcript variants encoding different isoforms have been observed for this gene.
------	---

基因ID	8874
基因名	ARHGEF7
Swiss	Q14155
别名	ARHGEF7;BETA-PIX;COOL-1;COOL1;Nbla10314;P50;P50BP;P85;P85COOL1;P85SPR;PAK3;PIXB

产品验证



Western blot analysis of ARHGEF7 expressed in Mouse lung, SW620, Jurkat using ARHGEF7 Rabbit pAb at 1:1000. Secondary antibody: HRP Goat Anti-Rabbit IgG (H+L) at 1:5000. Lysates/proteins: 30ug per lane. Blocking buffer: 5% non-fat dry milk in TBST. Detection: ECL Enhanced Kit. Exposure time: 120s.

实验步骤

访问官网浏览详情: www.ablybio.cn