

MAT2B Rabbit pAb

货号: AYP14171

产品信息

反应	Human,Mouse
宿主	Rabbit
克隆性	Polyclonal
预测反应	WB: Homo sapiens
应用	WB
推荐浓度	WB: 1:500 - 1:2000
理论分子量	9kDa/28kDa/34kDa/36kDa/37kDa
实测分子量	37kDa
形式	Liquid
保存条件	Store at -20°C. Avoid freeze / thaw cycles. Buffer: PBS with 0.01% thiomersal,50% glycerol,pH7.3.
偶联物	Unconjugated
阳性对照	HeLa,Mouse brain,Mouse kidney
细胞定位	cytosol,extracellular exosome,nucleus
纯化	Affinity purification

抗原信息

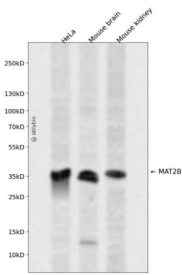
抗原信息	Recombinant fusion protein containing a sequence corresponding to amino acids 1-334 of human MAT2B (NP_037415.1).
序列	MVGREKELSIHFVPGSCLVEEEVNIPNRRVLVTGATGLLGRAVHKEFQQNNWHAVGCGFRRARPKFEQVNLDSNAVH HIIHDFQPHVIVHCAAERRPDVVENQPDAASQLNVDASGNLAKEAAAVGAFLIYISSDYVFDGTNPPYREEDIPAPLNLYGK TKLDGEKAVLENNLGAAVLRIPILYGEVEKLEESAVTVMFDKVFQSNKSANMDHWQQRFPPTHVKDVATVCRQLAEKRML DPSIKGTFHWSGNEQMTKYEMACAIADAFNLPSSHLRPITDSPVLGAQRPRNAQLDCSKLETLGIGQRTPFIRIGIKESLWPF LIDKRWRQTVFH

靶点信息

研究背景	The protein encoded by this gene belongs to the methionine adenosyltransferase (MAT) family. MAT catalyzes the biosynthesis of S-adenosylmethionine from methionine and ATP. This protein is the regulatory beta subunit of MAT. Alternative splicing results in multiple transcript variants encoding different isoforms.
------	--

基因ID	27430
基因名	MAT2B
Swiss	Q9NZL9
别名	MAT2B;MAT-II;MATIIbeta;Nbla02999;SDR23E1;TGR

产品验证



Western blot analysis of MAT2B expressed in HeLa, Mouse brain, Mouse kidney using MAT2B Rabbit pAb at 1:1000. Secondary antibody: HRP Goat Anti-Rabbit IgG (H+L) at 1:5000. Lysates/proteins: 30ug per lane. Blocking buffer: 5% non-fat dry milk in TBST. Detection: ECL Enhanced Kit. Exposure time: 120s.

实验步骤

访问官网浏览详情: www.ablybio.cn