

LAMTOR1 Rabbit pAb

货号: **AYP14170**

产品信息

反应	Human,Mouse,Rat
宿主	Rabbit
克隆性	Polyclonal
预测反应	WB: Mus musculus
应用	WB IHC IF/ICC
推荐浓度	WB: 1:500 - 1:1000 IHC: 1:50 - 1:100 IF/ICC: 1:50 - 1:100
理论分子量	17kDa
实测分子量	18kDa
形式	Liquid
保存条件	Store at -20°C. Avoid freeze / thaw cycles. Buffer: PBS with 0.01% thiomersal,50% glycerol,pH7.3.
偶联物	Unconjugated
阳性对照	B-cell,HeLa,Jurkat,U-87MG,Mouse brain
细胞定位	Cell membrane,Cytoplasmic side,Late endosome membrane,Lipid-anchor,Lysosome membrane
纯化	Affinity purification

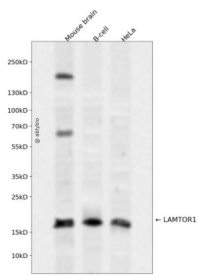
抗原信息

抗原信息	Recombinant fusion protein containing a sequence corresponding to amino acids 1-161 of human LAMTOR1 (NP_060377.1).
序列	MGCCYSENEEDSDQDREERKLLLDPSSPPTKALNGAEPNYHSLPSARTDEQALLSSILAKTASNIIDVSAADSQGMEQHEYMDRARQYSTRLAVLSSSLTHWKKLPPLPSLTSQPHQVLASEPIPFSDLQQVSRIAAYAYSALSQIRVDAKEELVVQFGIP

靶点信息

研究背景	As part of the Ragulator complex it is involved in amino acid sensing and activation of mTORC1, a signaling complex promoting cell growth in response to growth factors, energy levels, and amino acids. Activated by amino acids through a mechanism involving the lysosomal V-ATPase, the Ragulator functions as a guanine nucleotide exchange factor activating the small GTPases Rag. Activated Ragulator and Rag GTPases function as a scaffold recruiting mTORC1 to lysosomes where it is in turn activated. LAMTOR1 is directly responsible for anchoring the Ragulator complex to membranes. Also required for late endosomes/lysosomes biogenesis it may regulate both the recycling of receptors through endosomes and the MAPK signaling pathway through recruitment of some of its components to late endosomes. May be involved in cholesterol homeostasis regulating LDL uptake and cholesterol release from late endosomes/lysosomes. May also play a role in RHOA activation.
基因ID	55004
基因名	LAMTOR1
Swiss	Q6IAA8
别名	LAMTOR1;C11orf59;PDRO;Ragulator1;p18;p27RF-Rho

产品验证



Western blot analysis of LAMTOR1 expressed in Mouse brain, B-cell, HeLa using LAMTOR1 Rabbit pAb at 1:1000. Secondary antibody: HRP Goat Anti-Rabbit IgG (H+L) at 1:5000. Lysates/proteins: 30ug per lane. Blocking buffer: 5% non-fat dry milk in TBST. Detection: ECL Enhanced Kit. Exposure time: 120s.

实验步骤

访问官网浏览详情: www.ablybio.cn