

SPTLC2 Rabbit pAb

货号: **AYP14161**

产品信息

反应	Human,Mouse,Rat
宿主	Rabbit
克隆性	Polyclonal
预测反应	WB: Mus musculus,Homo sapiens
应用	WB
推荐浓度	WB: 1:500 - 1:2000
理论分子量	62kDa
实测分子量	58kDa
形式	Liquid
保存条件	Store at -20°C. Avoid freeze / thaw cycles. Buffer: PBS with 0.01% thiomersal,50% glycerol,pH7.3.
偶联物	Unconjugated
阳性对照	BxPC-3,U-87MG,293T,Mouse kidney,Mouse stomach
细胞定位	Endoplasmic reticulum membrane,Single-pass membrane protein
纯化	Affinity purification

抗原信息

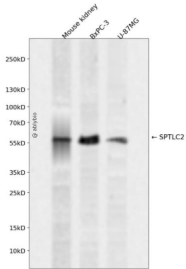
抗原信息	Recombinant fusion protein containing a sequence corresponding to amino acids 423-562 of human SPTLC2 (NP_004854.1).
序列	MKCMGQDGTSLGKECVQQLAENTRYFRRLKEMGFIIYGNEDSPVPLMLYMPAKIGAFGREMLKRNIGVVVVGFPATPII ESRARFCLSAAHTKEILDALKEIDEVGDLLQLKYSRHLVPLDRPFDETTYEETED

靶点信息

研究背景	This gene encodes a long chain base subunit of serine palmitoyltransferase. Serine palmitoyltransferase, which consists of two different subunits, is the key enzyme in sphingolipid biosynthesis. It catalyzes the pyridoxal-5-prime-phosphate-dependent condensation of L-serine and palmitoyl-CoA to 3-oxosphinganine. Mutations in this gene were identified in patients with hereditary sensory neuropathy type I.
基因ID	9517

基因名	SPTLC2
Swiss	O15270
别名	SPTLC2;HSN1C;LCB2;LCB2A;NSAN1C;SPT2;hLCB2a

产品验证



Western blot analysis of SPTLC2 expressed in Mouse kidney, BxPC-3, U-87MG using SPTLC2 Rabbit pAb at 1:1000. Secondary antibody: HRP Goat Anti-Rabbit IgG (H+L) at 1:5000. Lysates/proteins: 30ug per lane. Blocking buffer: 5% non-fat dry milk in TBST. Detection: ECL Enhanced Kit. Exposure time: 120s.

实验步骤

访问官网浏览详情: www.ablybio.cn