

SETD2 Rabbit pAb

货号: **AYP14159**

产品信息

反应	Human,Mouse,Rat
宿主	Rabbit
克隆性	Polyclonal
预测反应	IF: Mus musculus
应用	WB
推荐浓度	WB: 1:500 - 1:2000
理论分子量	175kDa/192kDa/287kDa
实测分子量	288kDa
形式	Liquid
保存条件	Store at -20°C. Avoid freeze / thaw cycles. Buffer: PBS with 0.01% thiomersal,50% glycerol,pH7.3.
偶联物	Unconjugated
阳性对照	HeLa,Jurkat
细胞定位	Chromosome,Nucleus
纯化	Affinity purification

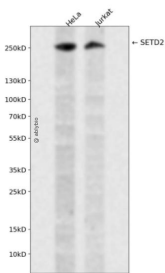
抗原信息

抗原信息	Recombinant fusion protein containing a sequence corresponding to amino acids 803-1103 of human SET D2 (NP_054878.5).
序列	SLCNSEAENIEPSVMKISSNSFMNVHLESKPVICDSRNLTDHSKFACEEYKQSIGSTSSASVNHFDLDLYQPIGSSGIASSLQ SLPPGIKVDLSLTKCGENTSPVLDAVLKSKKSSEFLKHAGKETIVEVGSDDLPSGKGFASRENRRNGLSGKCLQEAQEE GNSILPERRGRPEISLDERGEGGHVHTSDDSEVVFSSCDLNLTMEDSDGVTYALKCDSSGHAPEIVSTVHEDYSGSSESS NDESSEDTDSDSSIPRNLQSVVVVWPKNSTLPMEETSPCSSRSSQSYRHYS DHWED

靶点信息

研究背景	Huntington's disease (HD), a neurodegenerative disorder characterized by loss of striatal neurons, is caused by an expansion of a polyglutamine tract in the HD protein huntingtin. This gene encodes a protein belonging to a class of huntingtin interacting proteins characterized by WW motifs. This protein is a histone methyltransferase that is specific for lysine-36 of histone H3, and methylation of this residue is associated with active chromatin. This protein also contains a novel transcriptional activation domain and has been found associated with hyperphosphorylated RNA polymerase II.
基因ID	29072
基因名	SETD2
Swiss	Q9BYW2
别名	SETD2;HBP231;HIF-1;HIP-1;HSPC069;HYPB;KMT3A;LLS;SET2;p231HBP

产品验证



Western blot analysis of SETD2 expressed in HeLa, Jurkat using SETD2 Rabbit pAb at 1:1000. Secondary antibody: HRP Goat Anti-Rabbit IgG (H+L) at 1:5000. Lysates/proteins: 30ug per lane. Blocking buffer: 5% non-fat dry milk in TBST. Detection: ECL Enhanced Kit. Exposure time: 120s.

实验步骤

访问官网浏览详情: www.ablybio.cn