

REL Rabbit pAb

货号: **AYP14155**

产品信息

反应	Human,Mouse,Rat
宿主	Rabbit
克隆性	Polyclonal
预测反应	WB: Homo sapiens
应用	WB
推荐浓度	WB: 1:500 - 1:1000
理论分子量	65kDa/68kDa
实测分子量	78KDa
形式	Liquid
保存条件	Store at -20°C. Avoid freeze / thaw cycles. Buffer: PBS with 0.01% thiomersal,50% glycerol,pH7.3.
偶联物	Unconjugated
阳性对照	Raji,U-937,A-431,Mouse spleen,Mouse thymus,Rat thymus,Rat lung
细胞定位	Nucleus
纯化	Affinity purification

抗原信息

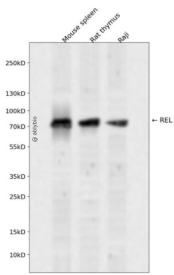
抗原信息	Recombinant fusion protein containing a sequence corresponding to amino acids 40-180 of human REL (N P_002899.1).
序列	STDNNRTPYSIQIMNYYGKGKVRITLVTKNDPYKPHPHDLVGKDCRDGYYEAFGQERRPLFFQNLGIRCVKKKEVKEAIITRIKAGINPFNVPEQLNDIEDCDLNVVRLCFQVFLPDEHGNTTALPPVVSNIYDNRA

靶点信息

研究背景	This gene encodes a protein that belongs to the Rel homology domain/immunoglobulin-like fold, plexin, transcription factor (RHD/IPT) family. Members of this family regulate genes involved in apoptosis, inflammation, the immune response, and oncogenic processes. This proto-oncogene plays a role in the survival and proliferation of B lymphocytes. Mutation or amplification of this gene is associated with B-cell lymphomas, including Hodgkin's lymphoma. Single nucleotide polymorphisms in this gene are associated with susceptibility to ulcerative colitis and rheumatoid arthritis. Alternative splicing results in multiple transcript variants encoding different isoforms.
------	--

基因ID	5966
基因名	REL
Swiss	Q04864
别名	REL;C-Rel

产品验证



Western blot analysis of REL expressed in Mouse spleen,Rat thymus,Raji using REL Rabbit pAb at 1:1000 . Secondary antibody: HRP Goat Anti-Rabbit IgG (H+L) at 1:5000. Lysates/proteins: 30ug per lane. Blocking buffer: 5% non-fat dry milk in TBST. Detection: ECL Enhanced Kit. Exposure time: 120s.

实验步骤

访问官网浏览详情: www.ablybio.cn