

Ser/thr-PP2A activator (PTPA) Rabbit pAb

货号: **AYP14148**

产品信息

反应	Human,Mouse,Rat
宿主	Rabbit
克隆性	Polyclonal
预测反应	WB: Rattus norvegicus
应用	WB
推荐浓度	WB: 1:500 - 1:2000
理论分子量	31kDa/33kDa/36kDa/40kDa
实测分子量	40kDa
形式	Liquid
保存条件	Store at -20°C. Avoid freeze / thaw cycles. Buffer: PBS with 0.01% thiomersal,50% glycerol,pH7.3.
偶联物	Unconjugated
阳性对照	LO2,K-562,U-87MG,MCF7,Mouse brain,Rat brain
细胞定位	Cytoplasm,Nucleus
纯化	Affinity purification

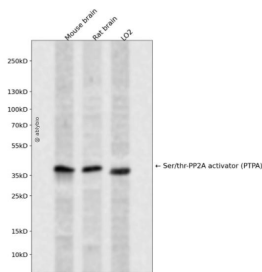
抗原信息

抗原信息	Recombinant fusion protein containing a sequence corresponding to amino acids 58-240 of human Ser/thr-PP2A activator (PTPA) (NP_821068.1).
序列	GVKGKCLTFEYRVSEMWNEVHEEKEQAAKQSVSCDECIPLPRAGHCAPSEAIEKLVALLNTLDRWIDETPPVDQPSRFGNK AYRTWYAKLDEEAENLVATVVPHTLAAAVPEVAVYLKESVGNSTRIDYGTGHEAAFAFLCCLCKIGVLRVDDQIAIVFKVF NRYLEVMRKLQKTYRMEPAG

靶点信息

研究背景	Protein phosphatase 2A is one of the four major Ser/Thr phosphatases and is implicated in the negative control of cell growth and division. Protein phosphatase 2A holoenzymes are heterotrimeric proteins composed of a structural subunit A, a catalytic subunit C, and a regulatory subunit B. The regulatory subunit is encoded by a diverse set of genes that have been grouped into the B/PR55, B'/PR61, and B''/PR72 families. These different regulatory subunits confer distinct enzymatic specificities and intracellular localizations to the holoenzyme. The product of this gene belongs to the B' family. This gene encodes a specific phosphotyrosyl phosphatase activator of the dimeric form of protein phosphatase 2A. Alternative splicing results in multiple transcript variants encoding different isoforms.
基因ID	5524
基因名	PTPA
Swiss	Q15257
别名	PTPA;PP2A;PPP2R4;PR53

产品验证



Western blot analysis of Ser/thr-PP2A activator (PTPA) expressed in Mouse brain, Rat brain, LO2 using Ser/thr-PP2A activator (PTPA) Rabbit pAb at 1:1000. Secondary antibody: HRP Goat Anti-Rabbit IgG (H+L) at 1:5000. Lysates/proteins: 30ug per lane. Blocking buffer: 5% non-fat dry milk in TBST. Detection: ECL Enhanced Kit. Exposure time: 120s.

实验步骤

访问官网浏览详情: www.ablybio.cn