

CLEC2D Rabbit pAb

货号: **AYP14142**

产品信息

| | |
|-------|--|
| 反应 | Human,Mouse |
| 宿主 | Rabbit |
| 克隆性 | Polyclonal |
| 预测反应 | WB: Homo sapiens |
| 应用 | WB |
| 推荐浓度 | WB: 1:500 - 1:2000 |
| 理论分子量 | 10kDa/14kDa/17kDa/21kDa/22kDa |
| 实测分子量 | 38kDa |
| 形式 | Liquid |
| 保存条件 | Store at -20°C. Avoid freeze / thaw cycles. Buffer: PBS with 0.02% sodium azide,50% glycerol,pH7.3. |
| 偶联物 | Unconjugated |
| 阳性对照 | Raji,HL-60,LO2,U-87MG,Mouse heart |
| 细胞定位 | Cell membrane,Cell surface,Endoplasmic reticulum,Single-pass type II membrane protein |
| 纯化 | Affinity purification |

抗原信息

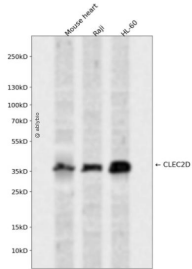
| | |
|------|---|
| 抗原信息 | Recombinant fusion protein containing a sequence corresponding to amino acids 60-154 of human CLEC2D (NP_037401.1). |
| 序列 | RANCHQEPSVCLQAACPESWIGFQRKCFYFSDDTKNWTSSQRFCDSDADLAQVESFQELNFLRLRYKGPSDHWIGLSR EQGQPWKWINGTEWTRQ |

靶点信息

| | |
|------|--|
| 研究背景 | This gene encodes a member of the natural killer cell receptor C-type lectin family. The encoded protein inhibits osteoclast formation and contains a transmembrane domain near the N-terminus as well as the C-type lectin-like extracellular domain. Several alternatively spliced transcript variants have been identified for this gene. |
| 基因ID | 29121 |

| | |
|-------|-----------------------|
| 基因名 | CLEC2D |
| Swiss | Q9UHP7 |
| 别名 | CLEC2D;CLAX;LLT1;OCIL |

产品验证



Western blot analysis of CLEC2D expressed in Mouse heart,Raji,HL-60 using CLEC2D Rabbit pAb at 1:1 000. Secondary antibody: HRP Goat Anti-Rabbit IgG (H+L) at 1:5000. Lysates/proteins: 30ug per lane. Blocking buffer: 5% non-fat dry milk in TBST. Detection: ECL Enhanced Kit. Exposure time: 120s.

实验步骤

访问官网浏览详情: www.ablybio.cn