

RPL38 Rabbit pAb

货号: **AYP14139**

产品信息

反应	Human
宿主	Rabbit
克隆性	Polyclonal
预测反应	IF: Homo sapiens
应用	WB
推荐浓度	WB: 1:500 - 1:2000
理论分子量	8kDa
实测分子量	12kDa
形式	Liquid
保存条件	Store at -20°C. Avoid freeze / thaw cycles. Buffer: PBS with 0.01% thiomersal, 50% glycerol, pH7.3.
偶联物	Unconjugated
阳性对照	A375, HeLa, MCF7
细胞定位	cytoplasm, cytosol, cytosolic ribosome, postsynaptic density
纯化	Affinity purification

抗原信息

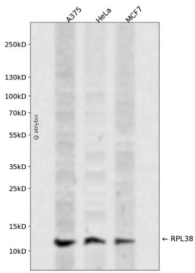
抗原信息	Recombinant fusion protein containing a sequence corresponding to amino acids 1-70 of human RPL38 (NP_000990.1).
序列	MPRKIEEIKDFLLTARRKDAKSVKIKKNKDNVFKVRCRSLYTLVITDKEKAELKQSLPPLAVKELK

靶点信息

研究背景	Ribosomes, the organelles that catalyze protein synthesis, consist of a small 40S subunit and a large 60S subunit. Together these subunits are composed of 4 RNA species and approximately 80 structurally distinct proteins. This gene encodes a ribosomal protein that is a component of the 60S subunit. The protein belongs to the L38E family of ribosomal proteins. It is located in the cytoplasm. Alternative splice variants have been identified, both encoding the same protein. As is typical for genes encoding ribosomal proteins, there are multiple processed pseudogenes of this gene dispersed through the genome, including one located in the promoter region of the type 1 angiotensin II receptor gene.
------	---

基因ID	6169
基因名	RPL38
Swiss	P63173
别名	RPL38;L38

产品验证



Western blot analysis of RPL38 expressed in A375, HeLa, MCF7 using RPL38 Rabbit pAb at 1:1000. Secondary antibody: HRP Goat Anti-Rabbit IgG (H+L) at 1:5000. Lysates/proteins: 30ug per lane. Blocking buffer: 5% non-fat dry milk in TBST. Detection: ECL Enhanced Kit. Exposure time: 120s.

实验步骤

访问官网浏览详情: www.ablybio.cn