

Sec23A Rabbit pAb

货号: AYP14129

产品信息

反应	Human,Mouse,Rat
宿主	Rabbit
克隆性	Polyclonal
预测反应	WB: Mus musculus,Homo sapiens
应用	WB
推荐浓度	WB: 1:500 - 1:2000
理论分子量	63kDa/86kDa
实测分子量	86kDa
形式	Liquid
保存条件	Store at -20°C. Avoid freeze / thaw cycles. Buffer: PBS with 0.01% thiomersal,50% glycerol,pH7.3.
偶联物	Unconjugated
阳性对照	B cells,LO2,HeLa,SGC-7901,HT-29,Mouse brain,Mouse liver,Rat brain
细胞定位	Golgi apparatus membrane,Peripheral membrane protein,Smooth endoplasmic reticulum membrane
纯化	Affinity purification

抗原信息

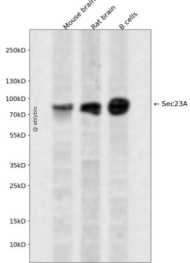
抗原信息	Recombinant fusion protein containing a sequence corresponding to amino acids 1-150 of human Sec23A (NP_006355.2).
序列	MTTYLEFIQQNEERDGVRFSWNVWPSSRLEATRMVVPVAALFTPLKERPDLPPIQYEPVLCSSRTTCRAVLNPLCQVDYRAK LWACNFCYQRNQFPSPYAGISELNQPAELLPOFSSIEYVVLRGPMPLIFLYVVDTCMEDEDLQALKES

靶点信息

研究背景	The protein encoded by this gene is a member of the SEC23 subfamily of the SEC23/SEC24 family. It is part of a protein complex and found in the ribosome-free transitional face of the endoplasmic reticulum (ER) and associated vesicles. This protein has similarity to yeast Sec23p component of COPII. COPII is the coat protein complex responsible for vesicle budding from the ER. The encoded protein is suggested to play a role in the ER-Golgi protein trafficking.
基因ID	10484

基因名	SEC23A
Swiss	Q15436
别名	SEC23A;CLSD

产品验证



Western blot analysis of Sec23A expressed in Mouse brain,Rat brain,B cells using Sec23A Rabbit pAb at 1:1000. Secondary antibody: HRP Goat Anti-Rabbit IgG (H+L) at 1:5000. Lysates/proteins: 30ug per lane. Blocking buffer: 5% non-fat dry milk in TBST. Detection: ECL Enhanced Kit. Exposure time: 120s.

实验步骤

访问官网浏览详情: www.ablybio.cn