

RPS24 Rabbit pAb

货号: **AYP14127**

产品信息

反应	Human,Mouse,Rat
宿主	Rabbit
克隆性	Polyclonal
预测反应	IHC: Homo sapiens
应用	WB IHC IP
推荐浓度	WB: 1:500 - 1:2000 IHC: 1:50 - 1:200 IP: 1:50 - 1:100
理论分子量	15kDa/32kDa
实测分子量	19kDa
形式	Liquid
保存条件	Store at -20°C. Avoid freeze / thaw cycles. Buffer: PBS with 0.01% thiomersal,50% glycerol,pH7.3.
偶联物	Unconjugated
阳性对照	U-87MG,293T,HeLa,Jurkat,Mouse liver,Mouse pancreas,Rat liver
细胞定位	cytoplasm,cytosol,cytosolic ribosome,endoplasmic reticulum,nucleoplasm,nucleus
纯化	Affinity purification

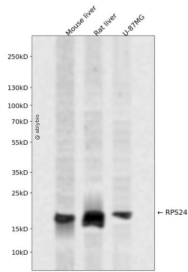
抗原信息

抗原信息	Recombinant fusion protein containing a sequence corresponding to amino acids 1-130 of human RPS24 (NP_148982.1).
序列	MNDTVTIRTRKFMNRLLRKQKQVIDVLHPGKATVPKTEIREKLAKMYKTPDVFVFGFRTHFGGGKTTGFGMIYDSLKYAKKNEPKHRLARHGLYEKKKTSRKQRKERKNRMKKVRGTAKANVVGAGKK

靶点信息

研究背景	Ribosomes, the organelles that catalyze protein synthesis, consist of a small 40S subunit and a large 60S subunit. Together these subunits are composed of 4 RNA species and approximately 80 structurally distinct proteins. This gene encodes a ribosomal protein that is a component of the 40S subunit. The protein belongs to the S24E family of ribosomal proteins. It is located in the cytoplasm. Multiple transcript variants encoding different isoforms have been found for this gene. As is typical for genes encoding ribosomal proteins, there are multiple processed pseudogenes of this gene dispersed through the genome. Mutations in this gene result in Diamond-Blackfan anemia.
基因ID	6229
基因名	RPS24
Swiss	P62847
别名	RPS24;DBA3;S24

产品验证



Western blot analysis of RPS24 expressed in Mouse liver,Rat liver,U-87MG using RPS24 Rabbit pAb at 1:1000. Secondary antibody: HRP Goat Anti-Rabbit IgG (H+L) at 1:5000. Lysates/proteins: 30ug per lane. Blocking buffer: 5% non-fat dry milk in TBST. Detection: ECL Enhanced Kit. Exposure time: 120s.

实验步骤

访问官网浏览详情: www.ablybio.cn