

SLC25A19 Rabbit pAb

货号: **AYP14118**

产品信息

反应	Human,Mouse,Rat
宿主	Rabbit
克隆性	Polyclonal
预测反应	WB: Homo sapiens
应用	WB IF/ICC
推荐浓度	WB: 1:500 - 1:2000 IF/ICC: 1:50 - 1:200
理论分子量	29kDa/35kDa
实测分子量	36kDa
形式	Liquid
保存条件	Store at -20°C. Avoid freeze / thaw cycles. Buffer: PBS with 0.01% thiomersal,50% glycerol,pH7.3.
偶联物	Unconjugated
阳性对照	HT-29
细胞定位	Mitochondrion inner membrane,Multi-pass membrane protein
纯化	Affinity purification

抗原信息

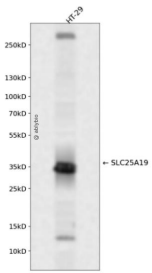
抗原信息	Recombinant fusion protein containing a sequence corresponding to amino acids 1-80 of human SLC25A19 (NP_068380.3).
序列	MVGYPKPDGRNNTKFQVAVAGSVSGLVTRALISPFDVIKIRFQLQHERLSRSDPSAKYHGILQASRQILQEEGPTAFWK

靶点信息

研究背景	This gene encodes a mitochondrial protein that is a member of the solute carrier family. Although this protein was initially thought to be the mitochondrial deoxynucleotide carrier involved in the uptake of deoxy nucleotides into the matrix of the mitochondria, further studies have demonstrated that this protein instead functions as the mitochondrial thiamine pyrophosphate carrier, which transports thiamine pyrophosphate into mitochondria. Mutations in this gene cause microcephaly, Amish type, a metabolic disease that results in severe congenital microcephaly, severe 2-ketoglutaric aciduria, and death within the first year. Multiple alternatively spliced variants, encoding the same protein, have been identified for this gene.
------	---

基因ID	60386
基因名	SLC25A19
Swiss	Q9HC21
别名	SLC25A19;DNC;MCPHA;MUP1;THMD3;THMD4;TPC

产品验证



Western blot analysis of SLC25A19 expressed in HT-29 using SLC25A19 Rabbit pAb at 1:1000. Secondary antibody: HRP Goat Anti-Rabbit IgG (H+L) at 1:5000. Lysates/proteins: 30ug per lane. Blocking buffer: 5% non-fat dry milk in TBST. Detection: ECL Enhanced Kit. Exposure time: 120s.

实验步骤

访问官网浏览详情: www.ablybio.cn