

CRLS1 Rabbit pAb

货号: **AYP14117**

产品信息

反应	Mouse
宿主	Rabbit
克隆性	Polyclonal
预测反应	WB: Homo sapiens
应用	WB
推荐浓度	WB: 1:200 - 1:500
理论分子量	22kDa/32kDa
实测分子量	33KDa
形式	Liquid
保存条件	Store at -20°C. Avoid freeze / thaw cycles. Buffer: PBS with 0.01% thiomersal, 50% glycerol, pH7.3.
偶联物	Unconjugated
阳性对照	HL-60
细胞定位	Mitochondrion inner membrane, Multi-pass membrane protein
纯化	Affinity purification

抗原信息

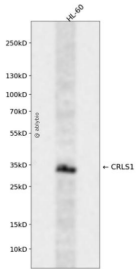
抗原信息	Recombinant fusion protein containing a sequence corresponding to amino acids 1-110 of human CRLS1 (NP_061968.1).
序列	MLALRVARGSWGALRGAAWAPGTRPSKRRACWALLPPVPCCLGCLAERWRLRPAALGLRLPGIGQRNHCSGAGKAAPRP AAGAGAAAAPGGQWGPASTPSLYENPWTIP

靶点信息

研究背景	This gene encodes a member of the CDP-alcohol phosphatidyltransferase class-I family of proteins. The encoded enzyme catalyzes the synthesis of cardiolipin, a phospholipid component of mitochondrial membranes that is critical for mitochondrial function.
基因ID	54675

基因名	CRLS1
Swiss	Q9UJA2
别名	CRLS1;C20orf155;CLS;CLS1;GCD10;dj967N21.6

产品验证



Western blot analysis of CRLS1 expressed in HL-60 using CRLS1 Rabbit pAb at 1:1000. Secondary antibody: HRP Goat Anti-Rabbit IgG (H+L) at 1:5000. Lysates/proteins: 30ug per lane. Blocking buffer: 5% non-fat dry milk in TBST. Detection: ECL Enhanced Kit. Exposure time: 120s.

实验步骤

访问官网浏览详情: www.ablybio.cn