

SLC1A4 Rabbit pAb

货号: **AYP14103**

产品信息

反应	Human,Mouse,Rat
宿主	Rabbit
克隆性	Polyclonal
预测反应	WB: Homo sapiens
应用	WB
推荐浓度	WB: 1:500 - 1:2000
理论分子量	24kDa/55kDa
实测分子量	53kDa
形式	Liquid
保存条件	Store at -20°C. Avoid freeze / thaw cycles. Buffer: PBS with 0.02% sodium azide,50% glycerol,pH7.3.
偶联物	Unconjugated
阳性对照	Raji,SW480,BT-474,Mouse brain,Mouse kidney,Rat brain
细胞定位	Melanosome,Membrane,Multi-pass membrane protein
纯化	Affinity purification

抗原信息

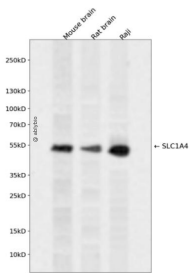
抗原信息	Recombinant fusion protein containing a sequence corresponding to amino acids 140-220 of human SLC1A4 (NP_003029.2).
序列	KPGSGAQLQSSDLGLEDSGPPVPKETVDSFLDLARNLFPSNLVVAAFRTYATDYKVVTQNSSSGNVTHEKIPIGTEIEG

靶点信息

研究背景	The protein encoded by this gene is a sodium-dependent neutral amino acid transporter for alanine, serine, cysteine, and threonine. Defects in this gene have been associated with developmental delay, microcephaly, and intellectual disability.
基因ID	6509
基因名	SLC1A4

Swiss	P43007
别名	SLC1A4;ASCT1;SATT;SPATCCM

产品验证



Western blot analysis of SLC1A4 expressed in Mouse brain,Rat brain,Raji using SLC1A4 Rabbit pAb at 1:1000. Secondary antibody: HRP Goat Anti-Rabbit IgG (H+L) at 1:5000. Lysates/proteins: 30ug per lane. Blocking buffer: 5% non-fat dry milk in TBST. Detection: ECL Enhanced Kit. Exposure time: 120s.

实验步骤

访问官网浏览详情: www.ablybio.cn