

MTCH2 Rabbit pAb

货号: **AYP14076**

产品信息

反应	Human,Mouse
宿主	Rabbit
克隆性	Polyclonal
预测反应	WB: Mus musculus
应用	WB IHC IF/ICC
推荐浓度	WB: 1:500 - 1:1000 IHC: 1:50 - 1:200 IF/ICC: 1:50 - 1:200
理论分子量	33kDa
实测分子量	33KDa
形式	Liquid
保存条件	Store at -20°C. Avoid freeze / thaw cycles. Buffer: PBS with 0.01% thiomersal,50% glycerol,pH7.3.
偶联物	Unconjugated
阳性对照	HeLa
细胞定位	Mitochondrion inner membrane,Multi-pass membrane protein
纯化	Affinity purification

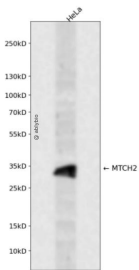
抗原信息

抗原信息	Recombinant fusion protein containing a sequence corresponding to amino acids 30-175 of human MTCH 2 (NP_055157.1).
序列	VGYEPLPPTIGRNIFGRQVCQLPGLFSYAQHIASIDGRRGLFTGLTPRLCSGVLGTVVHGKVLQHYQESDKGEELGPGNVQ KEVSSSFHDHVIKETTREMIARSAATLITHPFHVITLRSMVQFIGRESKYCGLCDSIITIYREEGI

靶点信息

研究背景	This gene encodes a member of the SLC25 family of nuclear-encoded transporters that are localized in the inner mitochondrial membrane. Members of this superfamily are involved in many metabolic pathways and cell functions. Genome-wide association studies in human have identified single-nucleotide polymorphisms in several loci associated with obesity. This gene is one such locus, which is highly expressed in white adipose tissue and adipocytes, and thought to play a regulatory role in adipocyte differentiation and biology. Alternatively spliced transcript variants encoding different isoforms have been found for this gene. A recent study showed this gene to be an authentic stop codon readthrough target, and that its mRNA can give rise to an additional C-terminally extended isoform by use of an alternative in-frame translation termination codon.
基因ID	23788
基因名	MTCH2
Swiss	Q9Y6C9
别名	MTCH2;HSPC032;MIMP;SLC25A50

产品验证



Western blot analysis of MTCH2 expressed in HeLa using MTCH2 Rabbit pAb at 1:1000. Secondary antibody: HRP Goat Anti-Rabbit IgG (H+L) at 1:5000. Lysates/proteins: 30ug per lane. Blocking buffer: 5% non-fat dry milk in TBST. Detection: ECL Enhanced Kit. Exposure time: 120s.

实验步骤

访问官网浏览详情: www.ablybio.cn