

# SLC12A1 Rabbit pAb

货号: **AYP14070**

## 产品信息

|       |  |
|-------|--|
| 反应    | Mouse,Rat  |
| 宿主    | Rabbit   |
| 克隆性   | Polyclonal   |
| 预测反应  | <b>IHC:</b> Pelodiscus sinensis  |
| 应用    | <a href="#">WB</a>   |
| 推荐浓度  | <b>WB:</b> 1:500 - 1:2000  |
| 理论分子量 | 121kDa   |
| 实测分子量 | 150kDa   |
| 形式    | Liquid   |
| 保存条件  | Store at -20°C. Avoid freeze / thaw cycles.<br>Buffer: PBS with 0.01% thiomersal,50% glycerol,pH7.3. |
| 偶联物   | Unconjugated   |
| 阳性对照  | Mouse kidney,Rat kidney  |
| 细胞定位  | Membrane,Multi-pass membrane protein   |
| 纯化    | Affinity purification  |

## 抗原信息

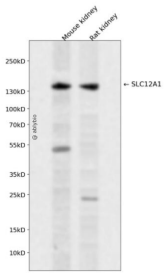
|      |   |
|------|---|
| 抗原信息 | A synthetic peptide corresponding to a sequence within amino acids 50-150 of human SLC12A1 (NP_000329.2). |
| 序列   | FGDEAQKRLRISFRPGNQECYDNFLQSGETAKTDASFHAYDSHTNTYYLQTFGHNTMDAVPKIEYYRNTGSISGPKVNRPSLLEIHEQLAKNVAVTPSSAD     |

## 靶点信息

|      |  |
|------|--|
| 研究背景 | This gene encodes a kidney-specific sodium-potassium-chloride cotransporter that is expressed on the luminal membrane of renal epithelial cells of the thick ascending limb of Henle's loop and the macula densa. It plays a key role in concentrating urine and accounts for most of the NaCl resorption. It is sensitive to such diuretics as furosemide and bumetanide. Some Bartter-like syndromes result from defects in this gene. Alternative splicing results in multiple transcript variants encoding distinct isoforms. Additional splice variants have been described but their biological validity in humans has not been experimentally proven. |
|------|--|

|       |                    |
|-------|--------------------|
| 基因ID  | 6557               |
| 基因名   | SLC12A1            |
| Swiss | Q13621             |
| 别名    | SLC12A1;BSC1;NKCC2 |

## 产品验证



Western blot analysis of SLC12A1 expressed in Mouse kidney,Rat kidney using SLC12A1 Rabbit pAb at 1:1000. Secondary antibody: HRP Goat Anti-Rabbit IgG (H+L) at 1:5000. Lysates/proteins: 30ug per lane. Blocking buffer: 5% non-fat dry milk in TBST. Detection: ECL Enhanced Kit. Exposure time: 120s.

## 实验步骤

访问官网浏览详情: [www.ablybio.cn](http://www.ablybio.cn)