

PTDSS1 Rabbit pAb

货号: **AYP14062**

产品信息

反应	Human
宿主	Rabbit
克隆性	Polyclonal
预测反应	WB: Mus musculus
应用	WB
推荐浓度	WB: 1:500 - 1:2000
理论分子量	56kDa
实测分子量	55kDa
形式	Liquid
保存条件	Store at -20°C. Avoid freeze / thaw cycles. Buffer: PBS with 0.01% thiomersal, 50% glycerol, pH7.3.
偶联物	Unconjugated
阳性对照	Raji
细胞定位	Endoplasmic reticulum membrane, Multi-pass membrane protein
纯化	Affinity purification

抗原信息

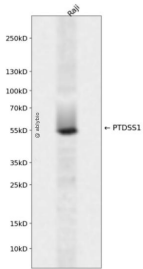
抗原信息	Recombinant fusion protein containing a sequence corresponding to amino acids 1-70 of human PTDSS1 (NP_055569.1).
序列	MASCVGSRTLKDDVNYKMHFRMINEQQVEDITIDFFYRPHITLLSFTIVSLMYFAFTRDDSVPEDNIW

靶点信息

研究背景	The protein encoded by this gene catalyzes the formation of phosphatidylserine from either phosphatidylcholine or phosphatidylethanolamine. Phosphatidylserine localizes to the mitochondria-associated membrane of the endoplasmic reticulum, where it serves a structural role as well as a signaling role. Defects in this gene are a cause of Lenz-Majewski hyperostotic dwarfism. Two transcript variants encoding different isoforms have been found for this gene.
基因ID	9791

基因名	PTDSS1
Swiss	P48651
别名	PTDSS1;LMHD;PSS1;PSSA

产品验证



Western blot analysis of PTDSS1 expressed in Raji using PTDSS1 Rabbit pAb at 1:1000. Secondary antibody: HRP Goat Anti-Rabbit IgG (H+L) at 1:5000. Lysates/proteins: 30ug per lane. Blocking buffer: 5% non-fat dry milk in TBST. Detection: ECL Enhanced Kit. Exposure time: 120s.

实验步骤

访问官网浏览详情: www.ablybio.cn