

# glucose-6-phosphate isomerase Rabbit pAb

货号: AYP14040

## 产品信息

反应	Human,Mouse,Rat
宿主	Rabbit
克隆性	Polyclonal
预测反应	<b>WB:</b> Homo sapiens
应用	<a href="#">WB</a> <a href="#">IF/ICC</a>
推荐浓度	<b>WB:</b> 1:500 - 1:2000 <b>IF/ICC:</b> 1:50 - 1:200
理论分子量	63kDa/64kDa
实测分子量	56kDa
形式	Liquid
保存条件	Store at -20°C. Avoid freeze / thaw cycles. Buffer: PBS with 0.02% sodium azide,50% glycerol,pH7.3.
偶联物	Unconjugated
阳性对照	HL-60,BT-474,MCF7,HeLa,Mouse kidney,Mouse heart,Mouse brain,Rat brain,Rat heart
细胞定位	Cytoplasm,Secreted
纯化	Affinity purification

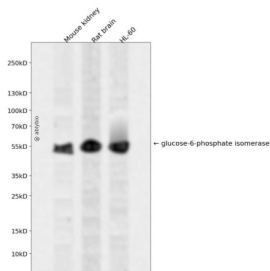
## 抗原信息

抗原信息	Recombinant fusion protein containing a sequence corresponding to amino acids 1-280 of human glucose -6-phosphate isomerase (NP_000166.2).
序列	MAALTRDPQFQKLQQWYREHRSELNLRRLFDANKDRFNHFSLTLNTNHGHILVDYSKNLVTEDVMRMLVDLAKSRGVEA ARERMFNGEKINYTEGRAVLHVALRNRSNTPILVDGKDVMPVNVLDKMKSFQQRVRSQDWKGYTGKTITDVINIGIGG SDLGPLMVTEALKPYSSGGPRVWYVSNIDGTHIAKTLAQLNPESLFIASKFTTQETITNAETAKEWFLQAADPSAVAK HFVALSTNTTKVKEFGIDPQNMFEFWDWVGGRYSLWSAI

## 靶点信息

研究背景	This gene encodes a member of the glucose phosphate isomerase protein family. The encoded protein has been identified as a moonlighting protein based on its ability to perform mechanistically distinct functions. In the cytoplasm, the gene product functions as a glycolytic enzyme (glucose-6-phosphate isomerase) that interconverts glucose-6-phosphate and fructose-6-phosphate. Extracellularly, the encoded protein (also referred to as neuroleukin) functions as a neurotrophic factor that promotes survival of skeletal motor neurons and sensory neurons, and as a lymphokine that induces immunoglobulin secretion. The encoded protein is also referred to as autocrine motility factor based on an additional function as a tumor-secreted cytokine and angiogenic factor. Defects in this gene are the cause of nonspherocytic hemolytic anemia and a severe enzyme deficiency can be associated with hydrops fetalis, immediate neonatal death and neurological impairment. Alternative splicing results in multiple transcript variants.
基因ID	2821
基因名	GPI
Swiss	P06744
别名	GPI;AMF;GNPI;NLK;PGI;PHI;SA-36;SA36

## 产品验证



Western blot analysis of glucose-6-phosphate isomerase expressed in Mouse kidney, Rat brain, H L-60 using glucose-6-phosphate isomerase Rabbit pAb at 1:1000. Secondary antibody: HRP Goat Anti-Rabbit IgG (H+L) at 1:5000. Lysates/proteins: 30ug per lane. Blocking buffer: 5% non-fat dry milk in TBST. Detection: ECL Enhanced Kit. Exposure time: 120s.

## 实验步骤

访问官网浏览详情: [www.ablybio.cn](http://www.ablybio.cn)