

# HBB Rabbit pAb

货号: **AYP14039**

## 产品信息

反应	Human,Rat
宿主	Rabbit
克隆性	Polyclonal
预测反应	<b>WB:</b> Danio rerio
应用	<a href="#">WB</a>
推荐浓度	<b>WB:</b> 1:500 - 1:2000
理论分子量	15kDa
实测分子量	16kDa
形式	Liquid
保存条件	Store at -20°C. Avoid freeze / thaw cycles. Buffer: PBS with 0.05% proclin300,50% glycerol,pH7.3.
偶联物	Unconjugated
阳性对照	Raji
细胞定位	blood microparticle,cytosol,extracellular exosome,extracellular region,extracellular space,hemoglobin complex
纯化	Affinity purification

## 抗原信息

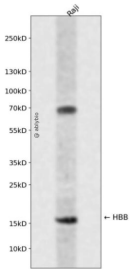
抗原信息	A synthetic peptide corresponding to a sequence within amino acids 68-147 of human HBB (NP_000509.1).
序列	VLGAFSDGLAHLNLDNLKGTFFATLSELHCDKLHVDPENFRLLGNVLCVLAHHFGKEFTPPVQAAAYQKVAVAGVANALAHKYH

## 靶点信息

研究背景	The alpha (HBA) and beta (HBB) loci determine the structure of the 2 types of polypeptide chains in adult hemoglobin, Hb A. The normal adult hemoglobin tetramer consists of two alpha chains and two beta chains. Mutant beta globin causes sickle cell anemia. Absence of beta chain causes beta-zero-thalassemia. Reduced amounts of detectable beta globin causes beta-plus-thalassemia. The order of the genes in the beta-globin cluster is 5'-epsilon -- gamma-G -- gamma-A -- delta -- beta--3'.
基因ID	3043

基因名	HBB
Swiss	P68871
别名	HBB;CD113t-C;beta-globin

## 产品验证



Western blot analysis of HBB expressed in Raji using HBB Rabbit pAb at 1:1000. Secondary antibody: HRP Goat Anti-Rabbit IgG (H+L) at 1:5000. Lysates/proteins: 30ug per lane. Blocking buffer: 5% non-fat dry milk in TBST. Detection: ECL Enhanced Kit. Exposure time: 120s.

## 实验步骤

访问官网浏览详情: [www.ablybio.cn](http://www.ablybio.cn)