

HADHA Rabbit pAb

货号: **AYP14038**

产品信息

反应	Human,Mouse
宿主	Rabbit
克隆性	Polyclonal
预测反应	WB: Homo sapiens
应用	WB IHC IF/ICC IP
推荐浓度	WB: 1:2000 - 1:6000 IHC: 1:50 - 1:200 IF/ICC: 1:50 - 1:200 IP: 1:50 - 1:200
理论分子量	28kDa/83kDa
实测分子量	78KDa
形式	Liquid
保存条件	Store at -20°C. Avoid freeze / thaw cycles. Buffer: PBS with 0.02% sodium azide,50% glycerol,pH7.3.
偶联物	Unconjugated
阳性对照	293T,K-562
细胞定位	Mitochondrion
纯化	Affinity purification

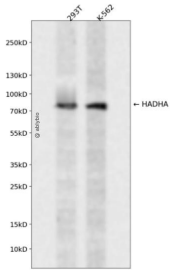
抗原信息

抗原信息	Recombinant fusion protein containing a sequence corresponding to amino acids 484-763 of human HADHA (NP_000173.2).
序列	IAAVSKRPEKVIGMHYFSPVDMQMLEIITTEKTSKDTASAVAVGLKQGVIIIVKDGPGFYTTTRCLAPMMSEVIRILQEGVDPKKLDSLTTSGFPVGAATLVDEVGVDVAKHVAEDLGKVFGERFGGNPELLTQMVSKGFLGRKSGKGFYIYQEGVKRKDLNSDMSILASLKLPPKSEVSSDEDIQFRLVTRFVNEAVMCLQEGILATPAEGDIGAVFGLGFPCLGGPFRFVDLYGAQKIVDRLLKKYEAAYGKQFTPCQLLADHANSNKKFYQ

靶点信息

研究背景	This gene encodes the alpha subunit of the mitochondrial trifunctional protein, which catalyzes the last three steps of mitochondrial beta-oxidation of long chain fatty acids. The mitochondrial membrane-bound heterocomplex is composed of four alpha and four beta subunits, with the alpha subunit catalyzing the 3-hydroxyacyl-CoA dehydrogenase and enoyl-CoA hydratase activities. Mutations in this gene result in trifunctional protein deficiency or LCHAD deficiency. The genes of the alpha and beta subunits of the mitochondrial trifunctional protein are located adjacent to each other in the human genome in a head-to-head orientation.
基因ID	3030
基因名	HADHA
Swiss	P40939
别名	HADHA;ECHA;GBP;HADH;LCEH;LCHAD;MTPA;TP-ALPHA

产品验证



Western blot analysis of HADHA expressed in 293T, K-562 using HADHA Rabbit pAb at 1:1000. Secondary antibody: HRP Goat Anti-Rabbit IgG (H+L) at 1:5000. Lysates/proteins: 30ug per lane. Blocking buffer: 5% non-fat dry milk in TBST. Detection: ECL Enhanced Kit. Exposure time: 120s.

实验步骤

访问官网浏览详情: www.ablybio.cn