

NOTCH3 Rabbit pAb

货号: **AYP14026**

产品信息

反应	Human,Mouse,Rat
宿主	Rabbit
克隆性	Polyclonal
预测反应	WB: Mus musculus
应用	WB IHC
推荐浓度	WB: 1:1000 - 1:5000 IHC: 1:50 - 1:200
理论分子量	243kDa
实测分子量	90KDa
形式	Liquid
保存条件	Store at -20°C. Avoid freeze / thaw cycles. Buffer: PBS with 0.02% sodium azide,50% glycerol,pH7.3.
偶联物	Unconjugated
阳性对照	K-562
细胞定位	Cell membrane,Nucleus,Single-pass type I membrane protein
纯化	Affinity purification

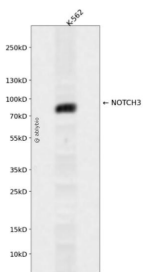
抗原信息

抗原信息	A synthetic peptide corresponding to a sequence within amino acids 2200 to the C-terminus of human NOTCH3 (NP_000426.2).
序列	TPVSPQERPPPYLAVPGHGEEYPAAGAHSSPPKARFLRVPSEHPYLTSPESPEHWASPPPSLSDWSESTPSPATATGAMATTTGALPAQPLPLSVPSLAQAQTQLGPQPEVTPKRQVLA

靶点信息

研究背景	This gene encodes the third discovered human homologue of the <i>Drosophila melanogaster</i> type I membrane protein notch. In <i>Drosophila</i> , notch interaction with its cell-bound ligands (delta, serrate) establishes an intercellular signalling pathway that plays a key role in neural development. Homologues of the notch-ligands have also been identified in human, but precise interactions between these ligands and the human notch homologues remains to be determined. Mutations in NOTCH3 have been identified as the underlying cause of cerebral autosomal dominant arteriopathy with subcortical infarcts and leukoencephalopathy (CADASIL).
基因ID	4854
基因名	NOTCH3
Swiss	Q9UM47
别名	NOTCH3;CADASIL;CADASIL1;CASIL;IMF2;LMNS;notch 3

产品验证



Western blot analysis of NOTCH3 expressed in K-562 using NOTCH3 Rabbit pAb at 1:1000. Secondary antibody: HRP Goat Anti-Rabbit IgG (H+L) at 1:5000. Lysates/proteins: 30ug per lane. Blocking buffer: 5% non-fat dry milk in TBST. Detection: ECL Enhanced Kit. Exposure time: 120s.

实验步骤

访问官网浏览详情: www.ablybio.cn