

TRIM21/SS-A Rabbit pAb

货号: **AYP14024**

产品信息

| | |
|-------|---|
| 反应 | Human,Mouse,Rat |
| 宿主 | Rabbit |
| 克隆性 | Polyclonal |
| 预测反应 | WB: Mus musculus IHC: Mus musculus |
| 应用 | WB IHC IF/ICC IP |
| 推荐浓度 | WB: 1:500 - 1:1000 IHC: 1:50 - 1:200 IF/ICC: 1:50 - 1:200 IP: 1:500 - 1:1000 |
| 理论分子量 | 45kDa/54kDa |
| 实测分子量 | 50KDa |
| 形式 | Liquid |
| 保存条件 | Store at -20°C. Avoid freeze / thaw cycles. Buffer: PBS with 0.05% proclin300,50% glycerol,pH7.3. |
| 偶联物 | Unconjugated |
| 阳性对照 | A-549,Jurkat,HeLa |
| 细胞定位 | Cytoplasm,Cytoplasmic vesicle,Nucleus,P-body,autophagosome |
| 纯化 | Affinity purification |

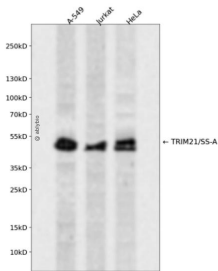
抗原信息

| | |
|------|--|
| 抗原信息 | Recombinant fusion protein containing a sequence corresponding to amino acids 86-334 of human TRIM21/SS-A (NP_003132.2). |
| 序列 | GTQGERCAVHGERLHLFCEKDGKALCWVCAQSRKHRDHAMVPLEEAAQEYQEKLQVALGELRRKQELAEEKLEVEIAIKRADWKKTVETQKSRIHAEFVQKQNFVVEEQRLQELEKDEREQLRILGEKEAKLAQQSQALQELISELDRRCHSSALELLQEVIIVLERSSESWNLKDLDITSPELRSVCHVPGLKKMLRTRCAVHITLDPDTANPWLILSEDRRQVRLGDTQQSIPGNEERFDSYPMVLGA |

靶点信息

| | |
|-------|---|
| 研究背景 | This gene encodes a member of the tripartite motif (TRIM) family. The TRIM motif includes three zinc-binding domains, a RING, a B-box type 1 and a B-box type 2, and a coiled-coil region. The encoded protein is part of the RoSSA ribonucleoprotein, which includes a single polypeptide and one of four small RNA molecules. The RoSSA particle localizes to both the cytoplasm and the nucleus. RoSSA interacts with autoantigens in patients with Sjogren syndrome and systemic lupus erythematosus. Alternatively spliced transcript variants for this gene have been described but the full-length nature of only one has been determined. |
| 基因ID | 6737 |
| 基因名 | TRIM21 |
| Swiss | P19474 |
| 别名 | TRIM21;RNF81;RO52;Ro/SSA;SSA;SSA1 |

产品验证



Western blot analysis of TRIM21/SS-A expressed in A-549, Jurkat, HeLa using TRIM21/SS-A Rabbit pAb at 1:1000. Secondary antibody: HRP Goat Anti-Rabbit IgG (H+L) at 1:5000. Lysates/proteins: 30ug per lane. Blocking buffer: 5% non-fat dry milk in TBST. Detection: ECL Enhanced Kit. Exposure time: 120s.

实验步骤

访问官网浏览详情: www.ablybio.cn