

CETP Rabbit pAb

货号: **AYP14023**

产品信息

反应	Human,Mouse,Rat
宿主	Rabbit
克隆性	Polyclonal
预测反应	WB: Mus musculus
应用	WB IHC
推荐浓度	WB: 1:500 - 1:2000 IHC: 1:50 - 1:200
理论分子量	47kDa/54kDa
实测分子量	75kDa
形式	Liquid
保存条件	Store at -20°C. Avoid freeze / thaw cycles. Buffer: PBS with 0.02% sodium azide,50% glycerol,pH7.3.
偶联物	Unconjugated
阳性对照	A-549,HepG2,A375,Mouse liver,Rat liver
细胞定位	Secreted,extracellular space
纯化	Affinity purification

抗原信息

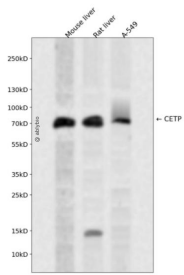
抗原信息	Recombinant fusion protein containing a sequence corresponding to amino acids 300-493 of human CETP (NP_000069.2).
序列	LMLSLMGDEFKAVLETWGFNTNQEIQEVVGGFSPQAQVTVHCLKMPKISCQNKGVVVNSSVMVKFLFPRPDQQHSVA YTFEEDIVTTVQASYSKLLFLSLLDFQITPKTVSNLTESSSESQSFLQSMITAVGIPEVMSRLEVFTALMNSKGVSLFDII NPEIITRDGFLLLQMDFGFPEHLLVDFLQSL

靶点信息

研究背景	The protein encoded by this gene is found in plasma, where it is involved in the transfer of cholesteryl ester from high density lipoprotein (HDL) to other lipoproteins. Defects in this gene are a cause of hyperalphalipoproteinemia 1 (HALP1). Two transcript variants encoding different isoforms have been found for this gene.
------	---

基因ID	1071
基因名	CETP
Swiss	P11597
别名	CETP;BPIFF;HDLCQ10

产品验证



Western blot analysis of CETP expressed in Mouse liver,Rat liver,A-549 using CETP Rabbit pAb at 1:1000 . Secondary antibody: HRP Goat Anti-Rabbit IgG (H+L) at 1:5000. Lysates/proteins: 30ug per lane. Blocking buffer: 5% non-fat dry milk in TBST. Detection: ECL Enhanced Kit. Exposure time: 120s.

实验步骤

访问官网浏览详情: www.ablybio.cn