

NUTF2 Rabbit pAb

货号: **AYP14020**

产品信息

| | |
|-------|--|
| 反应 | Human,Rat |
| 宿主 | Rabbit |
| 克隆性 | Polyclonal |
| 预测反应 | WB: Glycine max L |
| 应用 | WB IF/ICC |
| 推荐浓度 | WB: 1:500 - 1:2000 IF/ICC: 1:50 - 1:200 |
| 理论分子量 | 14kDa |
| 实测分子量 | 14kDa |
| 形式 | Liquid |
| 保存条件 | Store at -20°C. Avoid freeze / thaw cycles. Buffer: PBS with 0.02% sodium azide,50% glycerol,pH7.3. |
| 偶联物 | Unconjugated |
| 阳性对照 | |
| 细胞定位 | Cytoplasm |
| 纯化 | Affinity purification |

抗原信息

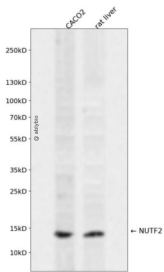
| | |
|------|---|
| 抗原信息 | Recombinant fusion protein containing a sequence corresponding to amino acids 1-127 of human NUTF2 (NP_005787.1). |
| 序列 | MGDKPIWEIQGSSFIQHYYQLFDNDRTQLGAIYIDASCLTWEGQQFQGKAAIVEKLSSLPFQKIQHSITAQDHDQPTDSCII SMVVGQLKADEDPIMGFHMFLLNINDAWVCTNDMFRLALHNFG |

靶点信息

| | |
|------|--|
| 研究背景 | This gene encodes a cytosolic factor that facilitates protein transport into the nucleus. The encoded protein is required for nuclear import of the small Ras-like GTPase, Ran which is involved in numerous cellular processes. This protein also interacts with the nuclear pore complex glycoprotein p62. |
| 基因ID | 10204 |

| | |
|-------|-----------------------|
| 基因名 | NUTF2 |
| Swiss | P61970 |
| 别名 | NUTF2;NTF-2;NTF2;PP15 |

产品验证



Western blot analysis of NUTF2 expressed in CACO2, rat liver using NUTF2 Rabbit pAb at 1:1000. Secondary antibody: HRP Goat Anti-Rabbit IgG (H+L) at 1:5000. Lysates/proteins: 30ug per lane. Blocking buffer: 5% non-fat dry milk in TBST. Detection: ECL Enhanced Kit. Exposure time: 120s.

实验步骤

访问官网浏览详情: www.ablybio.cn