

SLC2A5 Rabbit pAb

货号: **AYP14013**

产品信息

反应	Human,Mouse
宿主	Rabbit
克隆性	Polyclonal
预测反应	WB: Heterocephalus glaber
应用	WB
推荐浓度	WB: 1:200 - 1:2000
理论分子量	26kDa/54kDa
实测分子量	65kDa
形式	Liquid
保存条件	Store at -20°C. Avoid freeze / thaw cycles. Buffer: PBS with 0.01% thiomersal,50% glycerol,pH7.3.
偶联物	Unconjugated
阳性对照	Mouse testis,Mouse kidney
细胞定位	Apical cell membrane,Membrane,Multi-pass membrane protein
纯化	Affinity purification

抗原信息

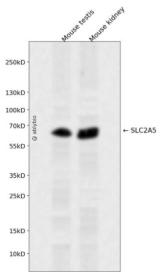
抗原信息	A synthetic peptide corresponding to a sequence within amino acids 1-100 of human SLC2A5 (NP_003030.1).
序列	MEQQDQSMKEGRLLVLALATLIAAFGSSFQYGYNVAAVNSPALLMQQFYNETYYGRTGEFMEDFPLTLLWSVTVSMFPF GGFIGSLLVGPLVNKFGRKG

靶点信息

研究背景	The protein encoded by this gene is a fructose transporter responsible for fructose uptake by the small intestine. The encoded protein also is necessary for the increase in blood pressure due to high dietary fructose consumption.
基因ID	6518

基因名	SLC2A5
Swiss	P22732
别名	SLC2A5;GLUT-5;GLUT5

产品验证



Western blot analysis of SLC2A5 expressed in Mouse testis, Mouse kidney using SLC2A5 Rabbit pAb at 1:1000. Secondary antibody: HRP Goat Anti-Rabbit IgG (H+L) at 1:5000. Lysates/proteins: 30ug per lane. Blocking buffer: 5% non-fat dry milk in TBST. Detection: ECL Enhanced Kit. Exposure time: 120s.

实验步骤

访问官网浏览详情: www.ablybio.cn