

# GRIA3 Rabbit pAb

货号: **AYP13992**

## 产品信息

反应	Human,Mouse,Rat
宿主	Rabbit
克隆性	Polyclonal
预测反应	<b>WB:</b> Rattus norvegicus
应用	<a href="#">WB</a> <a href="#">IF/ICC</a>
推荐浓度	<b>WB:</b> 1:100 - 1:500 <b>IF/ICC:</b> 1:50 - 1:100
理论分子量	101kDa
实测分子量	101kDa
形式	Liquid
保存条件	Store at -20°C. Avoid freeze / thaw cycles. Buffer: PBS with 0.02% sodium azide,50% glycerol,pH7.3.
偶联物	Unconjugated
阳性对照	Mouse brain,Rat brain
细胞定位	Cell junction,Cell membrane,Multi-pass membrane protein,postsynaptic cell membrane,synapse
纯化	Affinity purification

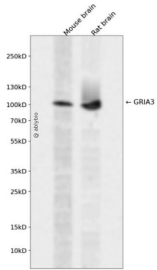
## 抗原信息

抗原信息	Recombinant fusion protein containing a sequence corresponding to amino acids 200-490 of human GRIA 3 (NP_000819.3).
序列	QEFRRIIEEMDRRQEKRYLIDCEVERINTILEQVVILGKHSRGYHYMLANLGFTDILLERVMHGGANITGFQIVNNENPMVQQ FIQRWVRLDEREFPEAKNAPLKYSALTHDAILVIAEAFRYLRRQRVDVSRRGSA GDCLANPAVPWSQGIDIERALKMVQV QGMTGNIQFDTYGRRNTNYTIDVYEMKVSGSRKAGYWNEYERFVPSDQQISNDSASSENRTIVVTILESPYVMYKKNHE QLEGNERYEGYCVDLAYEIAKHVRIKYKLSIVGDGKYGARDPETKIW

## 靶点信息

研究背景	Glutamate receptors are the predominant excitatory neurotransmitter receptors in the mammalian brain and are activated in a variety of normal neurophysiologic processes. These receptors are heteromeric protein complexes composed of multiple subunits, arranged to form ligand-gated ion channels. The classification of glutamate receptors is based on their activation by different pharmacologic agonists. The subunit encoded by this gene belongs to a family of AMPA (alpha-amino-3-hydroxy-5-methyl-4-isoxazole propionate)-sensitive glutamate receptors, and is subject to RNA editing (AGA->GGA; R->G). Alternative splicing at this locus results in different isoforms, which may vary in their signal transduction properties.
基因ID	2892
基因名	GRIA3
Swiss	P42263
别名	GRIA3;GLUR-C;GLUR-K3;GLUR3;GLURC;GluA3;MRX94

## 产品验证



Western blot analysis of GRIA3 expressed in Mouse brain,Rat brain using GRIA3 Rabbit pAb at 1:1000. Secondary antibody: HRP Goat Anti-Rabbit IgG (H+L) at 1:5000. Lysates/proteins: 30ug per lane. Blocking buffer: 5% non-fat dry milk in TBST. Detection: ECL Enhanced Kit. Exposure time: 120s.

## 实验步骤

访问官网浏览详情: [www.ablybio.cn](http://www.ablybio.cn)