

SLC22A2 Rabbit pAb

货号: **AYP13988**

产品信息

反应	Mouse
宿主	Rabbit
克隆性	Polyclonal
预测反应	IF: Mus musculus
应用	WB
推荐浓度	WB: 1:500 - 1:2000
理论分子量	26kDa/54kDa/62kDa
实测分子量	95kDa
形式	Liquid
保存条件	Store at -20°C. Avoid freeze / thaw cycles. Buffer: PBS with 0.02% sodium azide,50% glycerol,pH7.3.
偶联物	Unconjugated
阳性对照	Mouse kidney
细胞定位	Membrane,Multi-pass membrane protein
纯化	Affinity purification

抗原信息

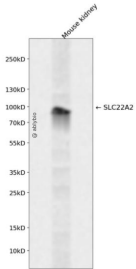
抗原信息	Recombinant fusion protein containing a sequence corresponding to amino acids 44-140 of human SLC22A2 (NP_003049.2).
序列	GFTPDHRCRSPGVAELSLRCGWSPAEEENYTPGPGPAGEASPRQCRRYEVDWNQSTFDCVDPLASLDTNRSRLPLGPCRDGWVYETPGSSIVTEFN

靶点信息

研究背景	Polyspecific organic cation transporters in the liver, kidney, intestine, and other organs are critical for elimination of many endogenous small organic cations as well as a wide array of drugs and environmental toxins. This gene is one of three similar cation transporter genes located in a cluster on chromosome 6. The encoded protein contains twelve putative transmembrane domains and is a plasma integral membrane protein. It is found primarily in the kidney, where it may mediate the first step in cation reabsorption.
基因ID	6582

基因名	SLC22A2
Swiss	O15244
别名	SLC22A2;43010;OCT2

产品验证



Western blot analysis of SLC22A2 expressed in Mouse kidney using SLC22A2 Rabbit pAb at 1:1000. Secondary antibody: HRP Goat Anti-Rabbit IgG (H+L) at 1:5000. Lysates/proteins: 30ug per lane. Blocking buffer: 5% non-fat dry milk in TBST. Detection: ECL Enhanced Kit. Exposure time: 120s.

实验步骤

访问官网浏览详情: www.ablybio.cn