

CSMD2 Rabbit pAb

货号: **AYP13980**

产品信息

反应	Human,Mouse,Rat
宿主	Rabbit
克隆性	Polyclonal
预测反应	WB: Rattus norvegicus
应用	WB
推荐浓度	WB: 1:500 - 1:2000
理论分子量	380kDa
实测分子量	280kDa
形式	Liquid
保存条件	Store at -20°C. Avoid freeze / thaw cycles. Buffer: PBS with 0.01% thiomersal,50% glycerol,pH7.3.
偶联物	Unconjugated
阳性对照	U-87MG,Mouse brain,Rat brain
细胞定位	Cell membrane,Single-pass membrane protein
纯化	Affinity purification

抗原信息

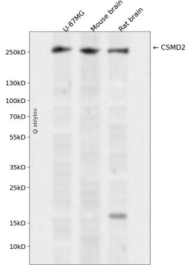
抗原信息	A synthetic peptide corresponding to a sequence within amino acids 2050-2150 of human CSMD2 (NP_443128.2).
序列	TSHETTVYFHSQNRPGFKLEYQDLTYSHQISSFLRGFDLSELERTNSTPPVAASYVWDLDPGCEAYELQECPDPEPFA NGIVRGAGYNVQSVTFECL

靶点信息

研究背景	The protein encoded by this gene is thought to be involved in the control of complement. Defects in this gene have been associated with schizophrenia. This gene may act as a tumor suppressor for colorectal cancer.
基因ID	114784

基因名	CSMD2
Swiss	Q7Z408
别名	CSMD2;dj1007G16.1;dj1007G16.2;dj947L8.1

产品验证



Western blot analysis of CSMD2 expressed in U-87MG, Mouse brain, Rat brain using CSMD2 Rabbit pAb at 1:1000. Secondary antibody: HRP Goat Anti-Rabbit IgG (H+L) at 1:5000. Lysates/proteins: 30ug per lane. Blocking buffer: 5% non-fat dry milk in TBST. Detection: ECL Enhanced Kit. Exposure time: 120s.

实验步骤

访问官网浏览详情: www.ablybio.cn