

ESRP1 Rabbit pAb

货号: **AYP13953**

产品信息

反应	Human,Mouse
宿主	Rabbit
克隆性	Polyclonal
预测反应	WB: Homo sapiens
应用	WB
推荐浓度	WB: 1:500 - 1:2000
理论分子量	67kDa/73kDa/75kDa
实测分子量	75kDa
形式	Liquid
保存条件	Store at -20°C. Avoid freeze / thaw cycles. Buffer: PBS with 0.01% thiomersal,50% glycerol,pH7.3.
偶联物	Unconjugated
阳性对照	LO2,MCF7,HT-29,293T,Mouse thymus,Mouse pancreas
细胞定位	Nucleus
纯化	Affinity purification

抗原信息

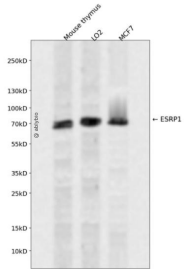
抗原信息	Recombinant fusion protein containing a sequence corresponding to amino acids 1-220 of human ESRP1 (NP_060167.2).
序列	MTASPDYLVVLFGITAGATGAKLGSDEKELILLFWKVVDLANKKVGQLHEVLVLRPDQLELTEDCKEETKIDVESLSSASQLD QALRQFNQSVSNELNIGVGTSFCLCTDQQLHVRQILHPEASKKNVLLPECFYSFFDLRKEFKKCCPGSPDIDKLDVATMTE YLNFEKSSSVSRYGASQVEDMGNIILAMISEPYNHRFSDPERVNYKFESGTCSKMEL

靶点信息

研究背景	
基因ID	54845
基因名	ESRP1

Swiss	Q6NXG1
别名	ESRP1;RBM35A;RMB35A

产品验证



Western blot analysis of ESRP1 expressed in Mouse thymus, LO2, MCF7 using ESRP1 Rabbit pAb at 1:1000. Secondary antibody: HRP Goat Anti-Rabbit IgG (H+L) at 1:5000. Lysates/proteins: 30ug per lane. Blocking buffer: 5% non-fat dry milk in TBST. Detection: ECL Enhanced Kit. Exposure time: 120s.

实验步骤

访问官网浏览详情: www.ablybio.cn