

ABCB7 Rabbit pAb

货号: **AYP13947**

产品信息

反应	Human,Mouse,Rat
宿主	Rabbit
克隆性	Polyclonal
预测反应	WB: Mus musculus
应用	WB IHC IF/ICC
推荐浓度	WB: 1:500 - 1:2000 IHC: 1:50 - 1:200 IF/ICC: 1:50 - 1:200
理论分子量	78kDa/82kDa
实测分子量	83kDa
形式	Liquid
保存条件	Store at -20°C. Avoid freeze / thaw cycles. Buffer: PBS with 0.01% thiomersal,50% glycerol,pH7.3.
偶联物	Unconjugated
阳性对照	A-431,293T,Mouse heart
细胞定位	Mitochondrion inner membrane,Multi-pass membrane protein
纯化	Affinity purification

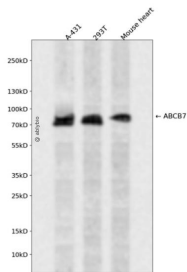
抗原信息

抗原信息	Recombinant fusion protein containing a sequence corresponding to amino acids 503-753 of human ABCB7 (NP_004290.2).
序列	AIVGGSGSGKSTIVRLLFRFYEPQKGSYLAGQNIQDVSLESRRRAVGVVPPQDAVLFHNTIYYNLLYGNISASPEEVYAVAKL AGLHDAILRMPHGYDTQVGERGLKLSGGKQRVAIARAILKDPVILYDEATSSLDSITEETILGAMKDVKHRTSIFIAHRLS TVVDADEIIVLDQGKVAERGTHHGLLANPHSIYSEMWHWTQSSRVQNHDPKWEAKKENISKEEERKKLQEEIVNSVKGCG NCSC

靶点信息

研究背景	The membrane-associated protein encoded by this gene is a member of the superfamily of ATP-binding cassette (ABC) transporters. ABC proteins transport various molecules across extra- and intra-cellular membranes. ABC genes are divided into seven distinct subfamilies (ABC1, MDR/TAP, MRP, ALD, OABP, GCN20, White). This protein is a member of the MDR/TAP subfamily. Members of the MDR/TAP subfamily are involved in multidrug resistance as well as antigen presentation. This gene encodes a half-transporter involved in the transport of heme from the mitochondria to the cytosol. With iron/sulfur cluster precursors as its substrates, this protein may play a role in metal homeostasis. Mutations in this gene have been associated with mitochondrial iron accumulation and isodicentric (X)(q13) and sideroblastic anemia. Alternatively spliced transcript variants encoding multiple isoforms have been observed for this gene.
基因ID	22
基因名	ABCB7
Swiss	O75027
别名	ABCB7;ABC7;ASAT;Atm1p;EST140535

产品验证



Western blot analysis of ABCB7 expressed in A-431,293T,Mouse heart using ABCB7 Rabbit pAb at 1:1000. Secondary antibody: HRP Goat Anti-Rabbit IgG (H+L) at 1:5000. Lysates/proteins: 30ug per lane. Blocking buffer: 5% non-fat dry milk in TBST. Detection: ECL Enhanced Kit. Exposure time: 120s.

实验步骤

访问官网浏览详情: www.ablybio.cn