

SLC7A1 Rabbit pAb

货号: **AYP13938**

产品信息

反应	Human,Mouse,Rat
宿主	Rabbit
克隆性	Polyclonal
预测反应	WB: Homo sapiens
应用	WB IHC
推荐浓度	WB: 1:500 - 1:1000 IHC: 1:50 - 1:200
理论分子量	67kDa
实测分子量	68KDa
形式	Liquid
保存条件	Store at -20°C. Avoid freeze / thaw cycles. Buffer: PBS with 0.05% proclin300,50% glycerol,pH7.3.
偶联物	Unconjugated
阳性对照	LNCaP
细胞定位	Cell membrane,Multi-pass membrane protein
纯化	Affinity purification

抗原信息

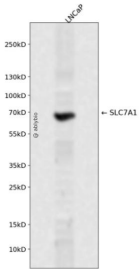
抗原信息	A synthetic peptide corresponding to a sequence within amino acids 500 to the C-terminus of human SLC 7A1 (NP_003036.1).
序列	TSLIAVLIITFCIVTVLGREALTKGALWAVFLLAGSALLCAVVTGVIWRQPESKTKLSFKVPFLPVLPILSIFVNVYLMMQLDQG TWVRFVAVWMLIGFIIYFGYGLWHSEEASLDADQARTPDGNLDQCK

靶点信息

研究背景	High-affinity, low capacity permease involved in the transport of the cationic amino acids (arginine, lysine and ornithine in non-hepatic tissues).
基因ID	6541

基因名	SLC7A1
Swiss	P30825
别名	SLC7A1;ATRC1;CAT-1;ERR;HCAT1;REC1L

产品验证



Western blot analysis of SLC7A1 expressed in LNCaP using SLC7A1 Rabbit pAb at 1:1000. Secondary antibody: HRP Goat Anti-Rabbit IgG (H+L) at 1:5000. Lysates/proteins: 30ug per lane. Blocking buffer: 5% non-fat dry milk in TBST. Detection: ECL Enhanced Kit. Exposure time: 120s.

实验步骤

访问官网浏览详情: www.ablybio.cn