

GPR182 Rabbit pAb

货号: **AYP13933**

产品信息

反应	Human,Mouse
宿主	Rabbit
克隆性	Polyclonal
预测反应	IF: Mus musculus
应用	WB
推荐浓度	WB: 1:500 - 1:2000
理论分子量	45kDa
实测分子量	45kDa
形式	Liquid
保存条件	Store at -20°C. Avoid freeze / thaw cycles. Buffer: PBS with 0.01% thiomersal,50% glycerol,pH7.3.
偶联物	Unconjugated
阳性对照	LO2,293T,mouse liver
细胞定位	Cell membrane,Multi-pass membrane protein
纯化	Affinity purification

抗原信息

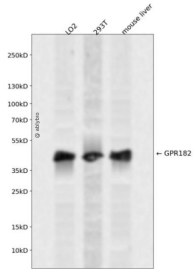
抗原信息	A synthetic peptide corresponding to a sequence within amino acids 250-350 of human GPR182 (NP_009195.1).
序列	QPKSRRHCLLLCAYVAVFVMCWLPHYVTLTLLTLHGTHISLHCHLVHLLYFFYDVIDCFMSMLHCVINPILYNFLSPHFRGRLLN AVVHYLPKDQTKAGTCA

靶点信息

研究背景	Adrenomedullin is a potent vasodilator peptide that exerts major effects on cardiovascular function. This gene encodes a seven-transmembrane protein that belongs to the family 1 of G-protein coupled receptors. Studies of the rat counterpart suggest that the encoded protein may function as a receptor for adrenomedullin.
基因ID	11318

基因名	GPR182
Swiss	O15218
别名	GPR182;7TMR;ADMR;AM-R;AMR;G10D;gamrh;hrhAMR

产品验证



Western blot analysis of GPR182 expressed in LO2,293T,mouse liver using GPR182 Rabbit pAb at 1:1000. Secondary antibody: HRP Goat Anti-Rabbit IgG (H+L) at 1:5000. Lysates/proteins: 30ug per lane. Blocking buffer: 5% non-fat dry milk in TBST. Detection: ECL Enhanced Kit. Exposure time: 120s.

实验步骤

访问官网浏览详情: www.ablybio.cn