

Cyclin L2 Rabbit pAb

货号: **AYP13927**

产品信息

反应	Human
宿主	Rabbit
克隆性	Polyclonal
预测反应	WB: Homo sapiens
应用	WB
推荐浓度	WB: 1:500 - 1:2000
理论分子量	24kDa/25kDa/33kDa/58kDa
实测分子量	58kDa
形式	Liquid
保存条件	Store at -20°C. Avoid freeze / thaw cycles. Buffer: PBS with 0.01% thiomersal, 50% glycerol, pH7.3.
偶联物	Unconjugated
阳性对照	U-251MG, HeLa, Jurkat, A375, LO2
细胞定位	Nucleus speckle
纯化	Affinity purification

抗原信息

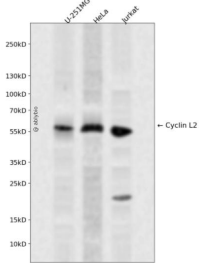
抗原信息	Recombinant fusion protein containing a sequence corresponding to amino acids 60-150 of human Cyclin L2 (NP_001307082.1).
序列	QLYARKKVDLTHLEGEVEKRKHAIEEAKAQARGLLPGGTQVLDGTSGFSPAPKLVESPKEGKSGKSPKPSPLSVKNTKRRLEGA KKAKADSPVN

靶点信息

研究背景	The protein encoded by this gene belongs to the cyclin family. Through its interaction with several proteins, such as RNA polymerase II, splicing factors, and cyclin-dependent kinases, this protein functions as a regulator of the pre-mRNA splicing process, as well as in inducing apoptosis by modulating the expression of apoptotic and antiapoptotic proteins. Alternatively spliced transcript variants encoding different isoforms have been described for this gene.
基因ID	81669

基因名	CCNL2
Swiss	Q96S94
别名	CCNL2;ANIA-6B;CCNM;CCNS;HCLA-ISO;HLA-ISO;PCEE;SB138;cyclin-L2

产品验证



Western blot analysis of Cyclin L2 expressed in U-251MG, HeLa, Jurkat using Cyclin L2 Rabbit pAb at 1:1000. Secondary antibody: HRP Goat Anti-Rabbit IgG (H+L) at 1:5000. Lysates/proteins: 30ug per lane. Blocking buffer: 5% non-fat dry milk in TBST. Detection: ECL Enhanced Kit. Exposure time: 120s.

实验步骤

访问官网浏览详情: www.ablybio.cn