

ATG16L2 Rabbit pAb

货号: AYP13926

产品信息

反应	Human,Mouse,Rat
宿主	Rabbit
克隆性	Polyclonal
预测反应	ELISA: Mus musculus RT-PCR: Mus musculus WB: Mus musculus
应用	WB
推荐浓度	WB: 1:500 - 1:2000
理论分子量	31kDa/56kDa/68kDa
实测分子量	75kDa
形式	Liquid
保存条件	Store at -20°C. Avoid freeze / thaw cycles. Buffer: PBS with 0.01% thiomersal,50% glycerol,pH7.3.
偶联物	Unconjugated
阳性对照	SGC-7901,HepG2,LO2,Mouse brain,Rat brain
细胞定位	Cytoplasm
纯化	Affinity purification

抗原信息

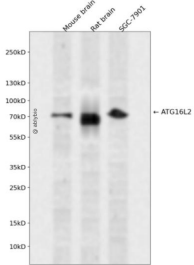
抗原信息	Recombinant fusion protein containing a sequence corresponding to amino acids 1-275 of human ATG16L2 (NP_203746.1).
序列	MAGPGVPGAPAARWKRHIVRQLRLDRDRTQKALFLELVPAYNHLLLEKAELLDKFSKKLQPEPNSVTPPTHQGPWEESELDS DQVPSLVALRVKWQEEEEGLRLVCGEMAYQVVEKGAALGTLESELQQRQSRLAALREARVAQLREARAQQAQQVEEWRA QNAVQRAAYEALRAHVGLREAALRRLQEEARDLLERLVQRKARAAAERNLNRERRERAKQARVSQELKKAARTVSISEGP DTLGDGMRERRETLALAPEPEPELEKEACEKWKRPFR

靶点信息

研究背景	May play a role in regulating epithelial homeostasis in an ATG16L1-dependent manner.
基因ID	89849

基因名	ATG16L2
Swiss	Q8NAA4
别名	ATG16L2;ATG16B;WDR80

产品验证



Western blot analysis of ATG16L2 expressed in Mouse brain,Rat brain,SGC-7901 using ATG16L2 Rabbit pAb at 1:1000. Secondary antibody: HRP Goat Anti-Rabbit IgG (H+L) at 1:5000. Lysates/proteins: 30ug per lane. Blocking buffer: 5% non-fat dry milk in TBST. Detection: ECL Enhanced Kit. Exposure time: 12 0s.

实验步骤

访问官网浏览详情: www.ablybio.cn