

— ABLYBIO, Help Your Research



RHD Rabbit pAb

货号: **AYP13914**

产品信息

反应	Mouse,Rat
宿主	Rabbit
克隆性	Polyclonal
预测反应	WB: Homo sapiens
应用	WB
推荐浓度	WB: 1:500 - 1:2000
理论分子量	34kDa/41kDa/43kDa/45kDa/53kDa
实测分子量	36kDa
形式	Liquid
保存条件	Store at -20°C. Avoid freeze / thaw cycles. Buffer: PBS with 0.01% thiomersal,50% glycerol,pH7.3.
偶联物	Unconjugated
阳性对照	mouse liver, rat liver
细胞定位	Membrane, Multi-pass membrane protein
纯化	Affinity purification

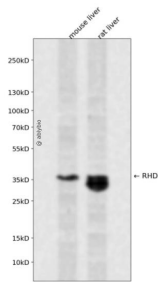
抗原信息

抗原信息	A synthetic peptide corresponding to a sequence within amino acids 150-250 of human RHD (NP_001121 163.1).
------	--

靶点信息

研究背景	The Rh blood group system is the second most clinically significant of the blood groups, second only to ABO. It is also the most polymorphic of the blood groups, with variations due to deletions, gene conversions, and missense mutations. The Rh blood group includes this gene, which encodes the RhD protein, and a second gene that encodes both the RhC and RhE antigens on a single polypeptide. The two genes, and a third unrelated gene, are found in a cluster on chromosome 1. The classification of Rh-positive and Rh-negative individuals is determined by the presence or absence of the highly immunogenic RhD protein on the surface of erythrocytes. Multiple transcript variants encoding different isoforms have been found for this gene.
基因ID	6007
基因名	RHD
Swiss	Q02161 (https://www.uniprot.org/uniprotkb/Q02161/entry)
别名	RHD,CD240D,DIIIc,RH,RH30,RHCED,RHDVA(TT),RHDeI,RHPHII,RHXIII,Rh4,RhDCw,RhII,RhK562-II,RhPI,RHD Rabbit pAb,Rh polypeptide 2,Rhesus D antigen

产品验证



Western blot analysis of RHD expressed in mouse liver, rat liver using RHD Rabbit pAb at 1:1000. Secondary antibody: HRP Goat Anti-Rabbit IgG (H+L) at 1:5000. Lysates/proteins: 30ug per lane. Blocking buffer: 5% non-fat dry milk in TBST. Detection: ECL Enhanced Kit. Exposure time: 120s.

实验步骤

访问官网浏览详情: www.ablybio.cn (<https://www.ablybio.cn/www.ablybio.cn>)