

# G6PC3 Rabbit pAb

货号: **AYP13913**

## 产品信息

反应	Human,Mouse,Rat
宿主	Rabbit
克隆性	Polyclonal
预测反应	<b>WB:</b> Mus musculus
应用	<a href="#">WB</a> <a href="#">IF/ICC</a>
推荐浓度	<b>WB:</b> 1:500 - 1:1000 <b>IF/ICC:</b> 1:50 - 1:200
理论分子量	38kDa
实测分子量	37KDa
形式	Liquid
保存条件	Store at -20°C. Avoid freeze / thaw cycles. Buffer: PBS with 0.01% thiomersal,50% glycerol,pH7.3.
偶联物	Unconjugated
阳性对照	293T,Mouse brain,Rat brain,Rat kidney
细胞定位	Endoplasmic reticulum membrane,Multi-pass membrane protein
纯化	Affinity purification

## 抗原信息

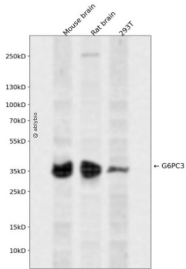
抗原信息	A synthetic peptide corresponding to a sequence within amino acids 50-150 of human G6PC3 (NP_61239 6.1).
序列	SRRVGI AVLWISLIT EWLNLIFK WFLGDRPF WVVHESGYYSQAPAQVHQFPSSCETGPGSPSGHCMITGAALWPIMTALSSQVATRARSRWVRVMP SLAY

## 靶点信息

研究背景	This gene encodes the catalytic subunit of glucose-6-phosphatase (G6Pase). G6Pase is located in the endoplasmic reticulum (ER) and catalyzes the hydrolysis of glucose-6-phosphate to glucose and phosphate in the last step of the gluconeogenic and glycogenolytic pathways. Mutations in this gene result in autosomal recessive severe congenital neutropenia. Alternative splicing results in multiple transcript variants.
基因ID	92579

基因名	G6PC3
Swiss	Q9BUM1
别名	G6PC3;SCN4;UGRP

## 产品验证



Western blot analysis of G6PC3 expressed in Mouse brain,Rat brain,293T using G6PC3 Rabbit pAb at 1:1000. Secondary antibody: HRP Goat Anti-Rabbit IgG (H+L) at 1:5000. Lysates/proteins: 30ug per lane. Blocking buffer: 5% non-fat dry milk in TBST. Detection: ECL Enhanced Kit. Exposure time: 120s.

## 实验步骤

访问官网浏览详情: [www.ablybio.cn](http://www.ablybio.cn)