

IGSF6 Rabbit pAb

货号: **AYP13912**

产品信息

反应	Human,Mouse,Rat
宿主	Rabbit
克隆性	Polyclonal
预测反应	WB: Rattus norvegicus
应用	WB
推荐浓度	WB: 1:500 - 1:2000
理论分子量	27kDa
实测分子量	30kDa
形式	Liquid
保存条件	Store at -20°C. Avoid freeze / thaw cycles. Buffer: PBS with 0.01% thiomersal,50% glycerol,pH7.3.
偶联物	Unconjugated
阳性对照	Raji,293T,mouse spleen,mouse thymus,mouse liver,rat spleen,rat thymus
细胞定位	Membrane,Single-pass type I membrane protein
纯化	Affinity purification

抗原信息

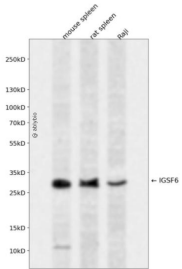
抗原信息	Recombinant fusion protein containing a sequence corresponding to amino acids 1-241 of human IGSF6 (NP_005840.2).
序列	MGTASRSNIARHLQTNLILFCVGAVGACTLSVTQPWYLEVDYTHEAVTIKCTFSATGCPSEQPTCLWFRYGAHQPENLCLD GCKSEADKFTVREALKENQVSLTVNRVTSNDSAIYICGIAFPSVPEARAKQTGGGTTLVVREIKLLSKELRSFLTALVSLLSVY VTGVCVAFILLSKSKSNPLRNKEIKEDSQKKKSARRIFQEIAQELYHKRHVETNQQSEKDNNTYENRRVLSNYERP

靶点信息

研究背景	Predicted to enable transmembrane signaling receptor activity. Predicted to be involved in cell surface receptor signaling pathway and immune response. Predicted to be integral component of plasma membrane.
基因ID	10261

基因名	IGSF6
Swiss	O95976
别名	IGSF6;DORA

产品验证



Western blot analysis of IGSF6 expressed in mouse spleen, rat spleen, Raji using IGSF6 Rabbit pAb at 1:1000. Secondary antibody: HRP Goat Anti-Rabbit IgG (H+L) at 1:5000. Lysates/proteins: 30ug per lane. Blocking buffer: 5% non-fat dry milk in TBST. Detection: ECL Enhanced Kit. Exposure time: 120s.

实验步骤

访问官网浏览详情: www.ablybio.cn