

# FLVCR1 Rabbit pAb

货号: **AYP13911**

## 产品信息

反应	Human
宿主	Rabbit
克隆性	Polyclonal
预测反应	<b>WB:</b> Homo sapiens
应用	<a href="#">WB</a>
推荐浓度	<b>WB:</b> 1:500 - 1:2000
理论分子量	30kDa/59kDa
实测分子量	60kDa
形式	Liquid
保存条件	Store at -20°C. Avoid freeze / thaw cycles. Buffer: PBS with 0.01% thiomersal, 50% glycerol, pH7.3.
偶联物	Unconjugated
阳性对照	Raji
细胞定位	Cell membrane, Mitochondrion membrane, Multi-pass membrane protein
纯化	Affinity purification

## 抗原信息

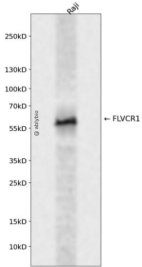
抗原信息	A synthetic peptide corresponding to a sequence within amino acids 250-350 of human FLVCR1 (NP_054772.1).
序列	AVGFLLPPVLPNTQNDTNLLACNISTMFYGTSAVATLLFILTAIAFKEKPRYPPSQAQALQDSPPEEYSYKKSIRNLFKNIPFVLLITYGIMTGAFYS

## 靶点信息

研究背景	This gene encodes a member of the major facilitator superfamily of transporter proteins. The encoded protein is a heme transporter that may play a critical role in erythropoiesis by protecting developing erythroid cells from heme toxicity. This gene may play a role in posterior column ataxia with retinitis pigmentosa and the hematological disorder Diamond-Blackfan syndrome.
基因ID	28982

基因名	FLVCR1
Swiss	Q9Y5Y0
别名	FLVCR1;AXPC1;FLVCR;MFSD7B;PCA;PCARP

## 产品验证



Western blot analysis of FLVCR1 expressed in Raji using FLVCR1 Rabbit pAb at 1:1000. Secondary antibody: HRP Goat Anti-Rabbit IgG (H+L) at 1:5000. Lysates/proteins: 30ug per lane. Blocking buffer: 5% non-fat dry milk in TBST. Detection: ECL Enhanced Kit. Exposure time: 120s.

## 实验步骤

访问官网浏览详情: [www.ablybio.cn](http://www.ablybio.cn)