

SLC17A6 Rabbit pAb

货号: **AYP13908**

产品信息

反应	Human,Mouse,Rat
宿主	Rabbit
克隆性	Polyclonal
预测反应	WB: Mus musculus
应用	WB IF/ICC
推荐浓度	WB: 1:500 - 1:2000 IF/ICC: 1:50 - 1:200
理论分子量	64kDa
实测分子量	64KDa
形式	Liquid
保存条件	Store at -20°C. Avoid freeze / thaw cycles. Buffer: PBS with 0.05% proclin300,50% glycerol,pH7.3.
偶联物	Unconjugated
阳性对照	SKOV3,SH-SY5Y,U-251MG
细胞定位	Cell junction,Cytoplasmic vesicle,Membrane,Multi-pass membrane protein,secretory vesicle,synapse,synaptic vesicle membrane,synaptosome
纯化	Affinity purification

抗原信息

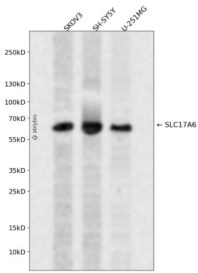
抗原信息	A synthetic peptide corresponding to a sequence within amino acids 500 to the C-terminus of human SLC17A6 (NP_065079.1).
序列	GEKQPWADPEETSEEKCGFIHEDELDEETGDITQNYINYGTTKSYGATTQANGGWPSGWEKKEEFVQGEVQDSSHYSYKD RVDYS

靶点信息

研究背景	SLC17A6 (solute carrier family 17 (vesicular glutamate transporter), member 6) is a protein-coding gene. Diseases associated with SLC17A6 include gnathodiaphyseal dysplasia, and schizophrenia. GO annotations related to this gene include L-glutamate transmembrane transporter activity and symporter activity. An important paralog of this gene is SLC17A7.
------	---

基因ID	57084
基因名	SLC17A6
Swiss	Q9P2U8
别名	SLC17A6;DNPI;VGLUT2

产品验证



Western blot analysis of SLC17A6 expressed in SKOV3,SH-SY5Y,U-251MG using SLC17A6 Rabbit pAb at 1:1000. Secondary antibody: HRP Goat Anti-Rabbit IgG (H+L) at 1:5000. Lysates/proteins: 30ug per lane. Blocking buffer: 5% non-fat dry milk in TBST. Detection: ECL Enhanced Kit. Exposure time: 120s.

实验步骤

访问官网浏览详情: www.ablybio.cn