

ALDH1A3 Rabbit pAb

货号: **AYP13903**

产品信息

反应	Human,Mouse
宿主	Rabbit
克隆性	Polyclonal
预测反应	IF: Homo sapiens
应用	WB
推荐浓度	WB: 1:500 - 1:2000
理论分子量	56kDa
实测分子量	50kDa
形式	Liquid
保存条件	Store at -20°C. Avoid freeze / thaw cycles. Buffer: PBS with 0.01% thiomersal,50% glycerol,pH7.3.
偶联物	Unconjugated
阳性对照	Mouse pancreas
细胞定位	Cytoplasm
纯化	Affinity purification

抗原信息

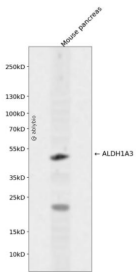
抗原信息	Recombinant fusion protein containing a sequence corresponding to amino acids 1-140 of human ALDH1A3 (NP_000684.2).
序列	MATANGAVENGQPDRKPPALPRPIRNLEVKFTKIFINNEWHESKSGKKFATCNPSTREQICEVEEGDKPDVDKAVEAAQVAFQRGSPWRRRLDALSRGRLHQLADLVERDRATLAALETMDTGKPFLLHAFFIDLEGCIPT

靶点信息

研究背景	This gene encodes an aldehyde dehydrogenase enzyme that uses retinal as a substrate. Mutations in this gene have been associated with microphthalmia, isolated 8, and expression changes have also been detected in tumor cells. Alternative splicing results in multiple transcript variants.
基因ID	220

基因名	ALDH1A3
Swiss	P47895
别名	ALDH1A3;ALDH1A6;ALDH6;MCOP8;RALDH3

产品验证



Western blot analysis of ALDH1A3 expressed in Mouse pancreas using ALDH1A3 Rabbit pAb at 1:1000. Secondary antibody: HRP Goat Anti-Rabbit IgG (H+L) at 1:5000. Lysates/proteins: 30ug per lane. Blocking buffer: 5% non-fat dry milk in TBST. Detection: ECL Enhanced Kit. Exposure time: 120s.

实验步骤

访问官网浏览详情: www.ablybio.cn