

S100A8 Rabbit pAb

货号: **AYP13894**

产品信息

反应	Human,Mouse,Rat
宿主	Rabbit
克隆性	Polyclonal
预测反应	WB: Homo sapiens IF: Homo sapiens
应用	WB IHC IF/ICC
推荐浓度	WB: 1:500 - 1:2000 IHC: 1:50 - 1:100 IF/ICC: 1:50 - 1:100
理论分子量	10kDa
实测分子量	11kDa
形式	Liquid
保存条件	Store at -20°C. Avoid freeze / thaw cycles. Buffer: PBS with 0.01% thiomersal,50% glycerol,pH7.3.
偶联物	Unconjugated
阳性对照	THP-1,Mouse lung,Mouse kidney
细胞定位	Cell membrane,Cytoplasm,Peripheral membrane protein,Secreted,cytoskeleton
纯化	Affinity purification

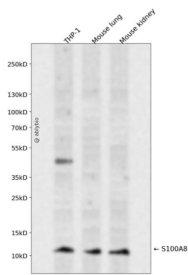
抗原信息

抗原信息	Recombinant fusion protein containing a sequence corresponding to amino acids 1-93 of human S100A8 (NP_002955.2).
序列	MLTELEKALNSIIDVYHKYSLIKGNFHAVYRDDLKLLLETECPQYIRKKGADVWFKELDINTDGAVNFQEFLLILVIKMGVAAH KKSHEESHKE

靶点信息

研究背景	The protein encoded by this gene is a member of the S100 family of proteins containing 2 EF-hand calcium-binding motifs. S100 proteins are localized in the cytoplasm and/or nucleus of a wide range of cells, and involved in the regulation of a number of cellular processes such as cell cycle progression and differentiation. S100 genes include at least 13 members which are located as a cluster on chromosome 1q21. This protein may function in the inhibition of casein kinase and as a cytokine. Altered expression of this protein is associated with the disease cystic fibrosis. Multiple transcript variants encoding different isoforms have been found for this gene.
基因ID	6279
基因名	S100A8
Swiss	P05109
别名	S100A8;60B8AG;CAGA;CFAG;CGLA;CP-10;L1Ag;MA387;MIF;MRP8;NIF;P8

产品验证



Western blot analysis of S100A8 expressed in THP-1, Mouse lung, Mouse kidney using S100A8 Rabbit pAb at 1:1000. Secondary antibody: HRP Goat Anti-Rabbit IgG (H+L) at 1:5000. Lysates/proteins: 30ug per lane. Blocking buffer: 5% non-fat dry milk in TBST. Detection: ECL Enhanced Kit. Exposure time: 120s.

实验步骤

访问官网浏览详情: www.ablybio.cn