

SUCLG1 Rabbit pAb

货号: **AYP13893**

产品信息

反应	Human,Mouse,Rat
宿主	Rabbit
克隆性	Polyclonal
预测反应	WB: Rattus norvegicus
应用	WB IF/ICC
推荐浓度	WB: 1:200 - 1:2000 IF/ICC: 1:50 - 1:200
理论分子量	36kDa
实测分子量	26-36kDa
形式	Liquid
保存条件	Store at -20°C. Avoid freeze / thaw cycles. Buffer: PBS with 0.01% thiomersal,50% glycerol,pH7.3.
偶联物	Unconjugated
阳性对照	U-251MG,HepG2,A-549,Mouse thymus,Mouse brain,Mouse heart,Mouse kidney,Mouse liver,Rat liver
细胞定位	Mitochondrion
纯化	Affinity purification

抗原信息

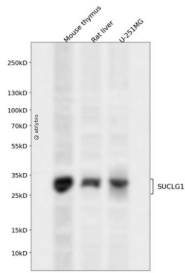
抗原信息	Recombinant fusion protein containing a sequence corresponding to amino acids 41-346 of human SUCLG1 (NP_003840.2).
序列	CSYTASRQHLYVDKNTKIICQGFTGKQGTFFHSQQALEYGTKLVGGTTPGKGGQTHLGLPVFNTVKEAKEQTGATASVIYV PPPFAAAINEAIEAEIPLVVCITEGIPQQDMVRVKHLLRQEKTRLIGPNCPGVINPGECKIGIMPGHIHKKGRIGIVSRSGTLT YEAHVHQTQVGLGQSLCVGIGGDPFNGTDFIDCLEIFLNDSETEGIIIGLIGEIGGNAEENAAEFLLKQHNSGPNSKPVVFSIAGL TAPPGRRMGHAGAIAGGKGGAKEKISALQSAGVVVSMSPAQLGTTIYKEFEKRKML

靶点信息

研究背景	This gene encodes the alpha subunit of the heterodimeric enzyme succinate coenzyme A ligase. This enzyme is targeted to the mitochondria and catalyzes the conversion of succinyl CoA and ADP or GDP to succinate and ATP or GTP. Mutations in this gene are the cause of the metabolic disorder fatal infantile lactic acidosis and mitochondrial DNA depletion.
------	---

基因ID	8802
基因名	SUCLG1
Swiss	P53597
别名	SUCLG1;GALPHA;MTDPS9;SUCLA1

产品验证



Western blot analysis of SUCLG1 expressed in Mouse thymus,Rat liver,U-251MG using SUCLG1 Rabbit p Ab at 1:1000. Secondary antibody: HRP Goat Anti-Rabbit IgG (H+L) at 1:5000. Lysates/proteins: 30ug p er lane. Blocking buffer: 5% non-fat dry milk in TBST. Detection: ECL Enhanced Kit. Exposure time: 120s

实验步骤

访问官网浏览详情: www.ablybio.cn