

KIF20B Rabbit pAb

货号: **AYP13890**

产品信息

| | |
|-------|---|
| 反应 | Human,Mouse,Rat |
| 宿主 | Rabbit |
| 克隆性 | Polyclonal |
| 预测反应 | WB: Homo sapiens |
| 应用 | WB IF/ICC |
| 推荐浓度 | WB: 1:200 - 1:2000 IF/ICC: 1:50 - 1:200 |
| 理论分子量 | 59kDa/199kDa/206kDa/210kDa/214kDa |
| 实测分子量 | 210kDa |
| 形式 | Liquid |
| 保存条件 | Store at -20°C. Avoid freeze / thaw cycles. Buffer: PBS with 0.01% thiomersal,50% glycerol,pH7.3. |
| 偶联物 | Unconjugated |
| 阳性对照 | U-251MG,OVCAR3,293T,HT-29,NIH/3T3,Mouse brain,Rat brain |
| 细胞定位 | Cell projection,Cytoplasm,Midbody,Nucleus,axon,centrosome,cytoskeleton,growth cone,microtubule organizing center,nucleolus,nucleoplasm,spindle,spindle pole |
| 纯化 | Affinity purification |

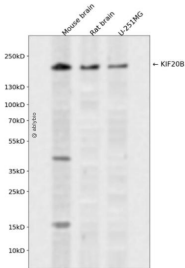
抗原信息

| | |
|------|--|
| 抗原信息 | Recombinant fusion protein containing a sequence corresponding to amino acids 1200-1500 of human KIF20B (NP_057279.2). |
| 序列 | KHLLQLKEEEEETNRQETEKLKEELSASSARTQNLKADLQRKEEDYADLKEKLTDAKKQIKVQKEVSVMRDEDKLLRIKIN ELEKKNQCSQELDMKQRTIQQLKEQLNNQKVEEAIQQYERACKDLNVKEKIIDMRMTLEEQEQTQVEQDQVLEAKLEE VERLATELEKWKEKCNDLETKNNQRSNKEHENNTDVLGKLTNLQDELQSEQKYNADRKKWLEEKMMLITQAKEAENIRN KEMKKYAEDRERFFKQNMELTAQLTEKSDSLQKWREERDQLVAALEIQLKALISSN |

靶点信息

| | |
|-------|---|
| 研究背景 | Plus-end-directed motor enzyme that is required for completion of cytokinesis. Required for proper midbody organization and abscission in polarized cortical stem cells. Plays a role in the regulation of neuronal polarization by mediating the transport of specific cargos. Participates in the mobilization of SHTN1 and in the accumulation of PIP3 in the growth cone of primary hippocampal neurons in a tubulin and actin-dependent manner. In the developing telencephalon, cooperates with SHTN1 to promote both the transition from the multipolar to the bipolar stage and the radial migration of cortical neurons from the ventricular zone toward the superficial layer of the neocortex. Involved in cerebral cortex growth (By similarity. Acts as an oncogene for promoting bladder cancer cells proliferation, apoptosis inhibition and carcinogenic progression. |
| 基因ID | 9585 |
| 基因名 | KIF20B |
| Swiss | Q96Q89 |
| 别名 | KIF20B;CT90;KRMP1;MPHOSPH1;MPP-1;MPP1 |

产品验证



Western blot analysis of KIF20B expressed in Mouse brain,Rat brain,U-251MG using KIF20B Rabbit pAb at 1:1000. Secondary antibody: HRP Goat Anti-Rabbit IgG (H+L) at 1:5000. Lysates/proteins: 30ug per lane. Blocking buffer: 5% non-fat dry milk in TBST. Detection: ECL Enhanced Kit. Exposure time: 120s.

实验步骤

访问官网浏览详情: www.ablybio.cn