

KIF20A Rabbit pAb

货号: **AYP13889**

产品信息

反应	Human,Mouse,Rat
宿主	Rabbit
克隆性	Polyclonal
预测反应	WB: Mus musculus
应用	WB
推荐浓度	WB: 1:200 - 1:2000
理论分子量	98kDa/100kDa
实测分子量	105kDa
形式	Liquid
保存条件	Store at -20°C. Avoid freeze / thaw cycles. Buffer: PBS with 0.01% thiomersal,50% glycerol,pH7.3.
偶联物	Unconjugated
阳性对照	HeLa,A-549,Mouse spleen,Mouse testis,Mouse heart,Mouse lung,Mouse brain,Rat spleen
细胞定位	Cytoplasm,Golgi apparatus,cytoskeleton,spindle
纯化	Affinity purification

抗原信息

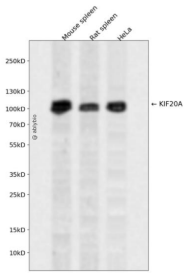
抗原信息	Recombinant fusion protein containing a sequence corresponding to amino acids 591-890 of human KIF20A (NP_005724.1).
序列	EICNEMVEQMQRREQWCSEHLDTQKELLEEMYEEKLNILKESLTSFYQEEIQRDEKIEELEALLQEARQQSVAHQQSGSE LALRRSQRLAASASTQQLQEVKAKLQCKAELNSTTEELHXYQKMLEPPPSAKPFTIDVDKLEEGQKNIRLLRTELQKLGE SLQSAERACCHSTGAGKLRQALTTCDLILIKQDQTLAELQNNMVLVKLDRKKAACIAEQYHTVLKLGQVSAKKRLGTN QENQPNQPPGKKPFLRNLLPRTPTCQSSTDCSPYARILRSRRSPLLKSGPFGKKY

靶点信息

研究背景	Mitotic kinesin required for chromosome passenger complex (CPC-mediated cytokinesis. Following phosphorylation by PLK1, involved in recruitment of PLK1 to the central spindle. Interacts with guanosine triphosphate (GTP-bound forms of RAB6A and RAB6B. May act as a motor required for the retrograde RAB6 regulated transport of Golgi membranes and associated vesicles along microtubules. Has a microtubule plus end-directed motility.
------	---

基因ID	10112
基因名	KIF20A
Swiss	O95235
别名	KIF20A;MKLP2;RAB6KIFL

产品验证



Western blot analysis of KIF20A expressed in Mouse spleen,Rat spleen,HeLa using KIF20A Rabbit pAb at 1:1000. Secondary antibody: HRP Goat Anti-Rabbit IgG (H+L) at 1:5000. Lysates/proteins: 30ug per lane. Blocking buffer: 5% non-fat dry milk in TBST. Detection: ECL Enhanced Kit. Exposure time: 120s.

实验步骤

访问官网浏览详情: www.ablybio.cn